

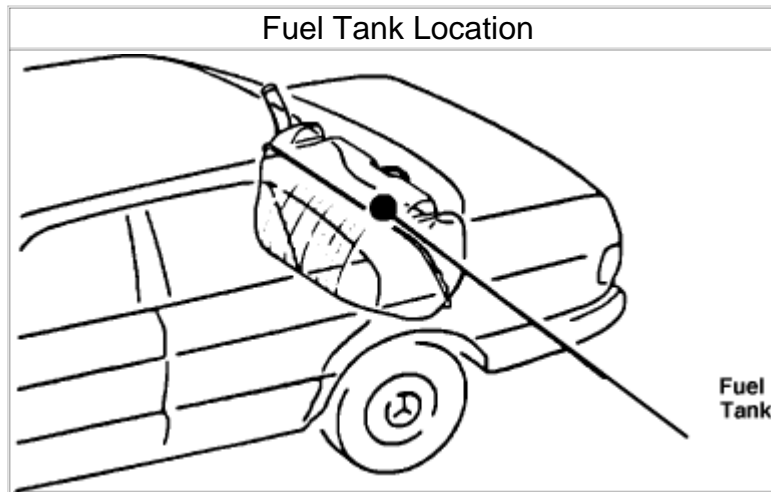
[Select Vehicle](#) | [New TSBs](#) | [Technician's Reference](#)

Component Search:

OK

[Conversion Calculator](#)**1989 Mercedes Benz 300SE (126 Chassis) L6-2960cc 3.0L SOHC (103)**[Vehicle Level](#) → [Powertrain Management](#) → [Fuel Delivery and Air Induction](#) → [Fuel Tank](#) → [Service and Repair](#) ←

Service and Repair

[Notes](#)

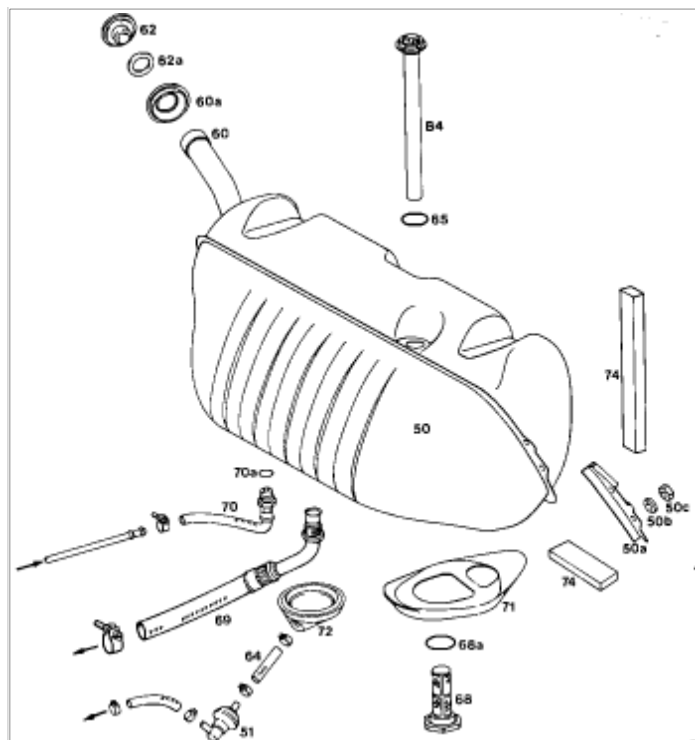
Zoom

Sized for Print

WARNING: Observe fire safety precautions.

1. Disconnect the NEG. battery cable and insulate.
2. Remove the fuel filler cap and draw out all fuel. **NOTE:** The fuel tank capacity is approx. 24 gals. (90 liters).

Fuel Tank View



Zoom

Sized for Print

3. Remove the [fuel filler neck](#) cup seal (60/1).
4. Remove the fuel tank partition wall at the front of the trunk.
5. Detach the fuel gauge sending unit electrical connector.
6. Disconnect the [fuel supply line](#) (69) and the return line (70).
7. Detach the vent valve (51).
8. Unscrew tank fasteners (50/3)
9. Remove the fuel tank strainer (68) and clean Thoroughly.
10. Lift out the fuel tank.

NOTE: If the fuel tank is being replaced transfer the stick-on packings, the soundproofing strips and the fuel gauge sending unit to the new tank (note the correct position before removing).

11. Reinstall the fuel tank in reverse manner.

NOTE: a. Renew seals (70/1) and (68/1).

- b. Verify that seals (71, 72) are correctly fitted.
- c. Torque the [fuel supply line](#) (69) to approx. 20 ft. lbs. (28 Nm).
- d. Torque the fuel return line (70) to approx. 25 ft. lbs. (35 Nm).
- e. Torque the fasteners (50/3) to approx. 15.5 ft. lbs. (21 Nm). Make sure washers (50/2) are in place.
- f. Torque the fuel strainer to approx. 28.5 ft. lbs. (39 Nm).

12. Run the engine and check for fuel leaks.

© 2008 ALldata LLC. All rights reserved.

[Terms of Use](#)