



Applies To: **1998-02 Accord V6** – ALL  
**1996-00 Civic DX, LX** – ALL  
**1999-00 Odyssey** – ALL

**August 10, 2004**

## Rough Idle at Cold Start; MIL Comes On With DTC P0107 or P0108 (Supersedes 04-004, dated March 5, 2004)

### SYMPTOM

In cold weather, the engine idles roughly after a cold start. The MIL may also come on with DTC P0107 (MAP sensor circuit low voltage) or DTC P0108 (MAP sensor circuit high voltage) set.

### PROBABLE CAUSE

Moisture freezes inside the MAP sensor.

### CORRECTIVE ACTION

Replace the MAP sensor. For Japan-built Civics, also replace the intake manifold.

### PARTS INFORMATION

#### Accord V6 and Odyssey

MAP Sensor Set:

P/N 04161-P8F-305, H/C 6688501

*For 1998-99 Accord V6s, order this additional part:*

Sensor Spacer:

P/N 16442-P8F-A21, H/C 6562896

#### Civic DX, LX

MAP Sensor Set:

P/N 04161-P2E-305, H/C 6688493

*For Japan-built Civics (VIN begins with JHM), order these additional parts:*

Intake Manifold (DX only):

P/N 17100-P2F-A00, H/C 4810214

Intake Manifold (LX only):

P/N 17100-P2F-A10, H/C 4810222

Intake Manifold Gasket:

P/N 17105-P2F-A02, H/C 5971312

Fuel Pressure Regulator O-Ring (12.1 x 1.9 mm):

P/N 16741-PG7-005, H/C 2317469

Injector Seal Ring (four required):

P/N 16472-PH7-003, H/C 2335867

Injector Rubber Ring (four required):

P/N 16473-PD6-000, H/C 1855576

O-Ring (7.3 x 2.2 mm) (four required):  
 P/N 91301-PM7-003, H/C 4258976

Throttle Body Gasket:

P/N 16176-P2A-004, H/C 4776217

### WARRANTY CLAIM INFORMATION

**In warranty:** The normal warranty applies.

**Accord V6; 1998-00 Civic DX, LX; Odyssey**

OP#	Description	FRT
123503	Retrieve the DTC and clear codes with the HDS	0.3
122115	<b>Accord V6:</b> Replace MAP sensor and install adapter harness	0.5
122115	<b>1998-00 Civic DX, LX (U.S.-built):</b> Replace MAP sensor and install adapter harness	0.5
122116	<b>1998-00 Civic DX, LX (Japan-built):</b> Replace MAP sensor and install adapter harness (includes replacing intake manifold)	2.5
122115	<b>Odyssey:</b> Replace MAP sensor and install adapter harness	0.5

Failed Part: P/N 37830-PAA-S00  
 H/C 5430319

Defect Code: 03214

Symptom Code: 09103

Skill Level: Repair Technician

## 1996–97 Civic DX, LX

OP#	Description	FRT
123514	Retrieve the DTC and clear codes with the HDS	0.3
122128	<b>1996–97 Civic DX, LX (U.S.-built):</b> Replace MAP sensor and install adapter harness	0.5
111117	<b>1996–97 Civic DX, LX (Japan-built):</b> Replace MAP sensor and install adapter harness (includes replacing intake manifold)	2.5

Failed Part: P/N 37830-PAA-500  
H/C 5430319

Defect Code: 81400

Symptom Code: K4900

Skill Level: Repair Technician

**Out of warranty:** Any repair performed after warranty expiration may be eligible for goodwill consideration by the District Parts and Service Manager or your Zone Office. You must request consideration, and get a decision, before starting work.

### DIAGNOSIS

1. Connect the Honda Diagnostic System (HDS) with version 1.012.023 or later software to the 16P data link connector (DLC).
2. Turn the ignition switch to ON (II). Turn on the HDS.
3. At the screen prompts, enter the VIN and the odometer reading, and then verify the correct date and time.
4. From the **System Selection Menu** screen, select **PGM FI**.
5. From the **Mode Menu** screen, select **DTCs/Freeze Data**.
6. Enter the repair order number when prompted, then read the screen.  
*Is DTC P0107 or P0108 set?*  
**Yes** - Go to step 7.  
**No** - Go to step 8.
7. Press the freeze data (camera film strip) icon on the right side of the screen. Look at the **IAT SENSOR** value.  
*Is the IAT value at or below 32°F (0°C) (4.0 volts)?*  
**Yes** - Press the red **DTC** icon on the right side of the screen to clear the DTC. Turn the ignition switch to LOCK (0), and then turn off and disconnect the HDS. Go to the appropriate **REPAIR PROCEDURE**.  
**No** - Continue with normal troubleshooting.

8. Find out from your customer the approximate ambient air temperature when the problem happened.

*Was the ambient air temperature at or below 32°F (0°C) when the problem happened?*

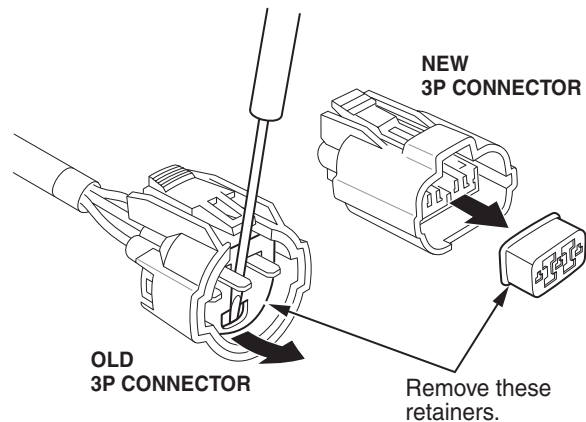
**Yes** - Go to the appropriate **REPAIR PROCEDURE**.

**No** - Continue with normal troubleshooting.

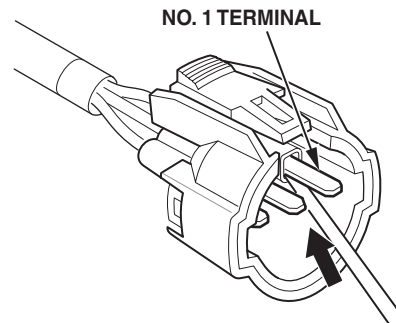
### REPAIR PROCEDURE - ACCORD V6, ODYSSEY

NOTE: Discard the instructions that came with the kit; they are incorrect for this repair. Follow this procedure instead.

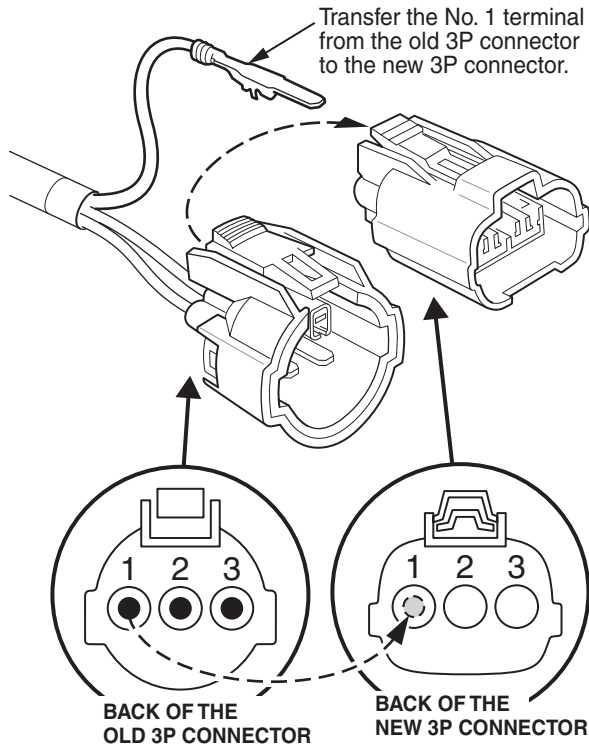
1. Unplug the 3P connector from the MAP sensor.
2. Use a small, flat-tip screwdriver to pry out the retainer from the connector. Also, pry out the retainer from the new 3P connector.



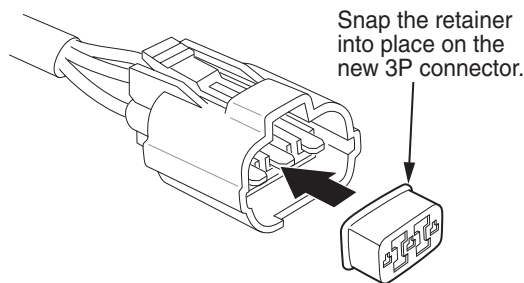
3. Remove the No. 1 terminal (YEL/RED wire) from the old 3P connector.



- Insert the No. 1 terminal (YEL/RED wire) into the left (No. 1) cavity of the new 3P connector.

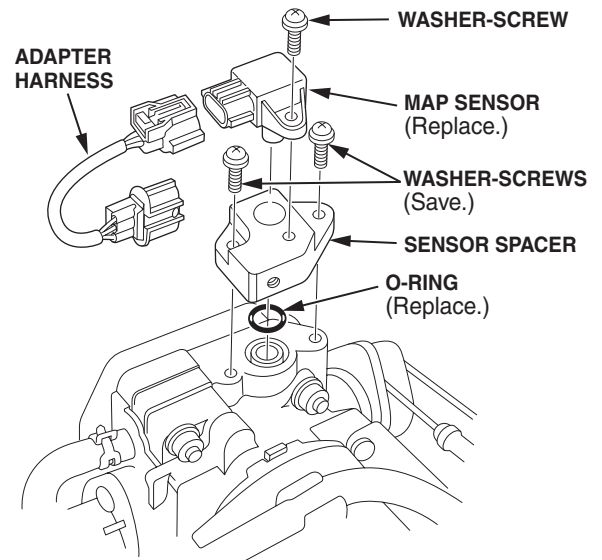


- Repeat steps 3 and 4 to transfer the No. 2 terminal (GRN/WHT wire) to the center (No. 2) cavity of the new 3P connector. Repeat steps 3 and 4 to transfer the No. 3 terminal (RED/GRN wire) to the right (No. 3) cavity of the new 3P connector. Discard the old 3P connector.
- Snap the retainer into place on the new 3P connector.



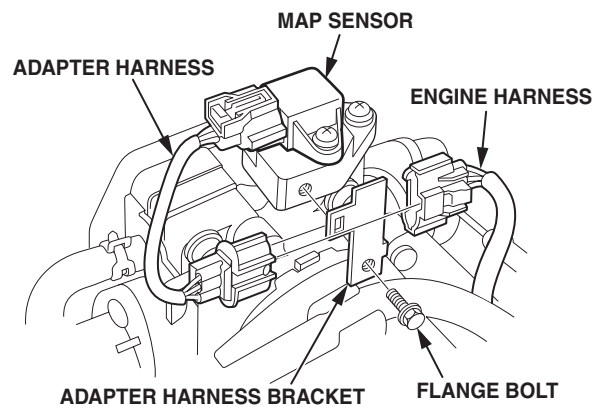
- Accord V6 only:* Remove and discard the throttle body cover.

- Remove the MAP sensor and the O-ring from the throttle body (two washer-screws). Discard the sensor and the O-ring, but save the washer-screws.



NOTE: For 1998–99 Accord V6 models, discard the sensor spacer from the kit, and use P/N 16442-P8F-A21, H/C 6562896, instead. Also, discard the adapter harness bracket from the kit. This bracket cannot be mounted to the spacer on those models.

- Position the new O-ring on the throttle body. Then install the sensor spacer with the washer-screws you saved in step 8.
- Odyssey, 2000–02 Accord V6 only:* Install the adapter harness bracket on the sensor spacer (one flange bolt).



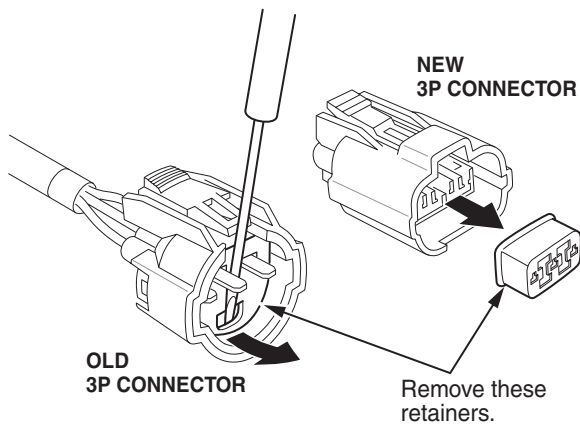
- Install the new MAP sensor on the sensor spacer (one washer-screw).
- Plug the large (gray) end of the adapter harness into the engine harness 3P connector. Then plug the small (black) end of the adapter harness into the MAP sensor.
- Odyssey, 2000–02 Accord V6 only:* Slide the engine harness 3P connector onto the harness bracket until it clicks into place.

14. 1998–99 Accord V6 only: Use a wire tie to secure the engine harness 3P connector to any nearby vacuum hose. Make sure the connector and the harness do not interfere with the throttle cables and the wire tie does not pinch the vacuum hose.

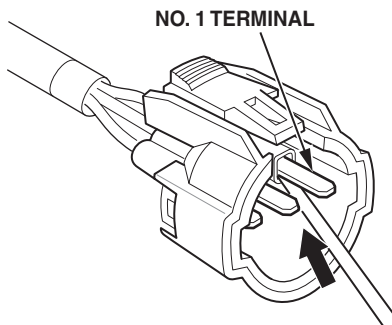
### REPAIR PROCEDURE - CIVIC (U.S.-BUILT)

NOTE: Discard the instructions that came with the kit; they are incorrect for this repair. Follow this procedure instead.

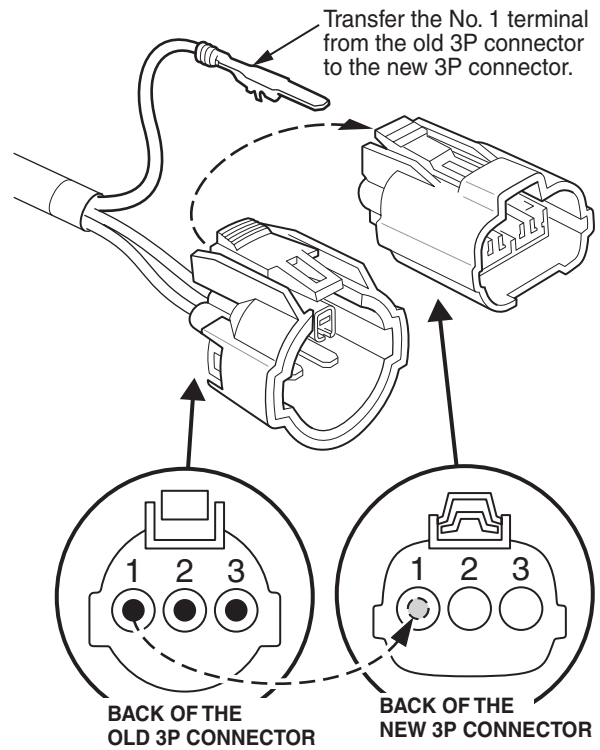
1. Remove the air cleaner.
2. Release the engine harness from its clamp. Then unplug the 3P connector from the MAP sensor.
3. Use a small, flat-tip screwdriver to pry out the retainer from the 3P connector. Also, pry out the retainer from the new 3P connector.



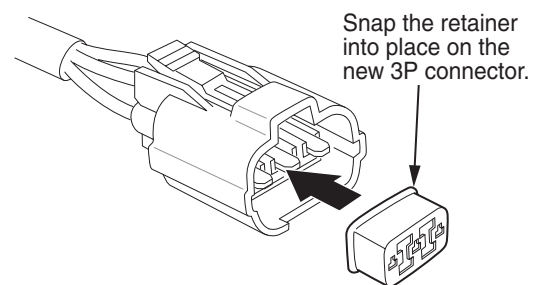
4. Remove the No. 1 terminal (YEL/RED wire) from the old 3P connector.



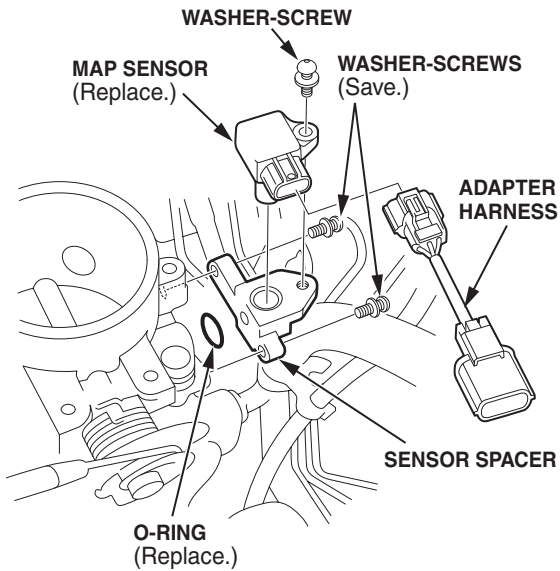
5. Insert the No. 1 terminal (YEL/RED wire) into the left (No. 1) cavity of the new 3P connector.



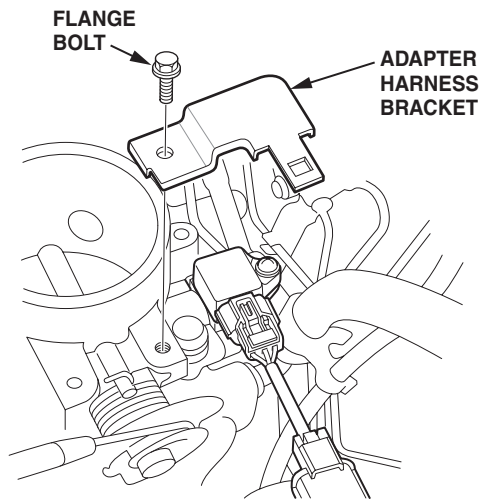
6. Repeat steps 4 and 5 to transfer the No. 2 terminal (GRN/WHT wire) to the center (No. 2) cavity of the new 3P connector. Repeat steps 4 and 5 to transfer the No. 3 terminal (RED/GRN wire) to the right (No. 3) cavity of the new 3P connector. Discard the old 3P connector.
7. Snap the retainer into place on the new 3P connector.



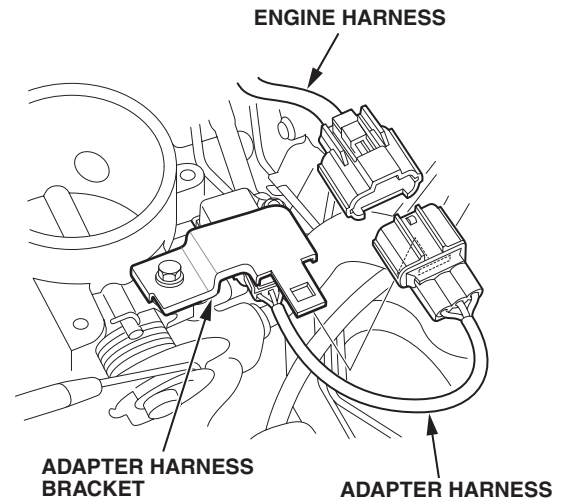
- Remove the MAP sensor and the O-ring from the throttle body (two washer-screws). Discard the sensor and the O-ring, but save the washer-screws.



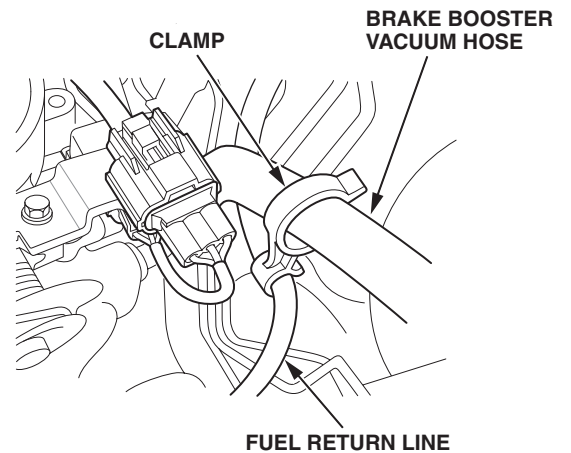
- Position the new O-ring on the throttle body. Then install the sensor spacer with the washer-screws you saved in step 8.
- Install the new MAP sensor on the sensor spacer (one washer-screw). Then plug the small (black) end of the adapter harness into the sensor.
- Install the adapter harness bracket on the throttle body (one flange bolt).



- Plug the large (gray) end of the adapter harness into the engine harness 3P connector. Slide the engine harness 3P connector onto the harness bracket until it clicks into place.



- Models with cruise control:* Reposition the vacuum hose and its clamp. Make sure the brake booster vacuum hose and the fuel return line do not interfere with each other.

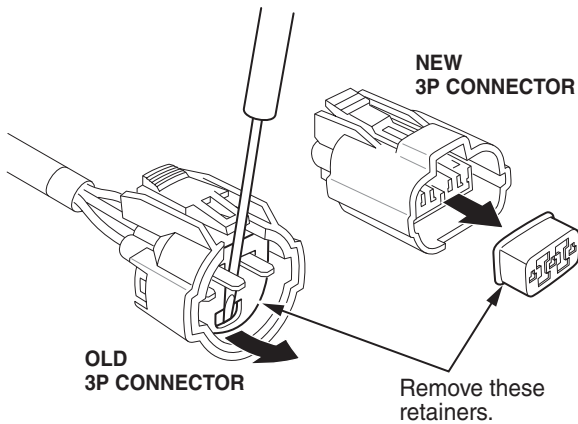


- Clamp the engine harness in place.
- Reinstall the air cleaner.

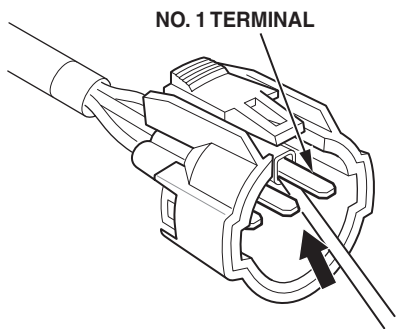
## REPAIR PROCEDURE - CIVIC (JAPAN-BUILT)

NOTE: Discard the instructions that came with the kit; they are incorrect for this repair. Follow this procedure instead.

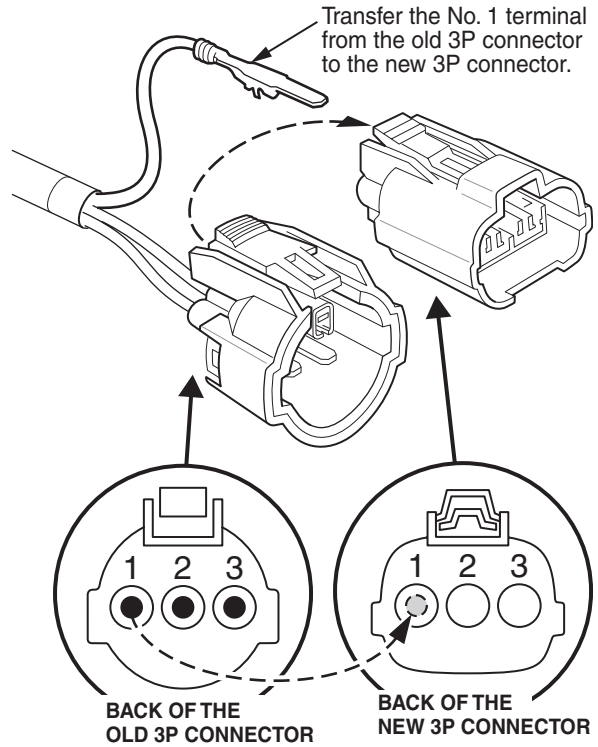
1. Remove the air cleaner.
2. Replace the intake manifold (see page 9-2 of the 1996–00 Civic Service Manual). Make sure you replace the fuel pressure regulator O-ring and the seal rings and rubber rings for the fuel injectors.
3. Release the engine harness from its clamp. Then unplug the 3P connector from the MAP sensor.
4. Use a small, flat-tip screwdriver to pry out the retainer from the connector. Also, pry out the retainer from the new 3P connector.



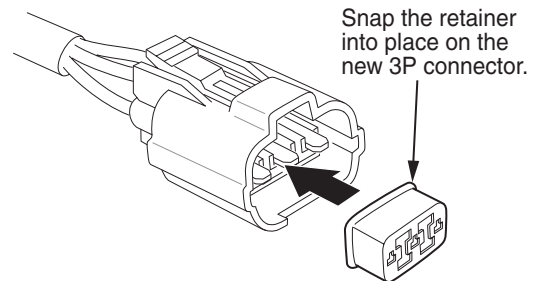
5. Remove the No. 1 terminal (YEL/RED wire) from the old 3P connector.



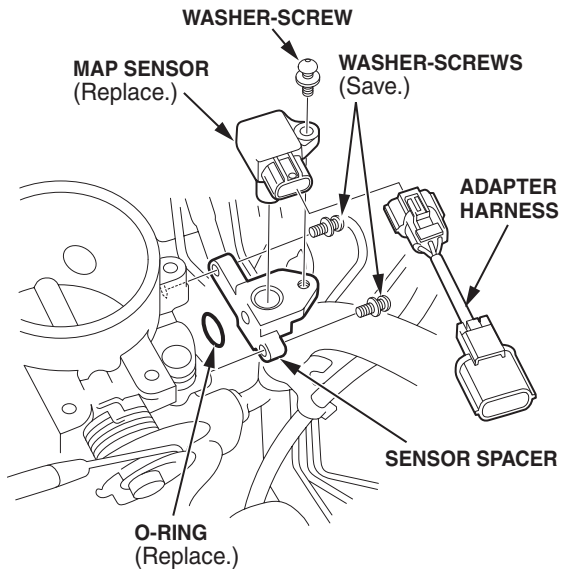
6. Insert the No. 1 terminal (YEL/RED wire) into the left (No. 1) cavity of the new 3P connector.



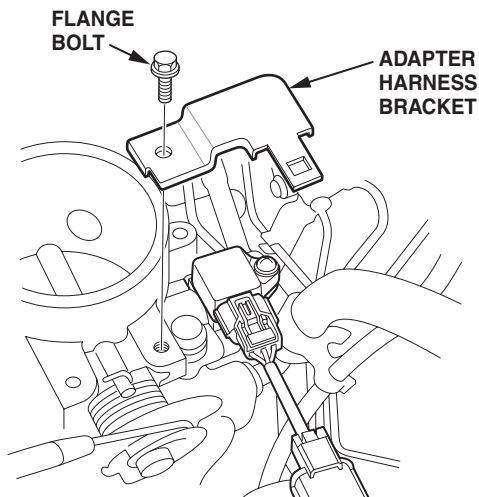
7. Repeat steps 5 and 6 to transfer the No. 2 terminal (GRN/WHT wire) to the center (No. 2) cavity of the new 3P connector. Repeat steps 5 and 6 to transfer the No. 3 terminal (RED/GRN wire) to the right (No. 3) cavity of the new 3P connector. Discard the old 3P connector.
8. Snap the retainer into place on the new 3P connector.



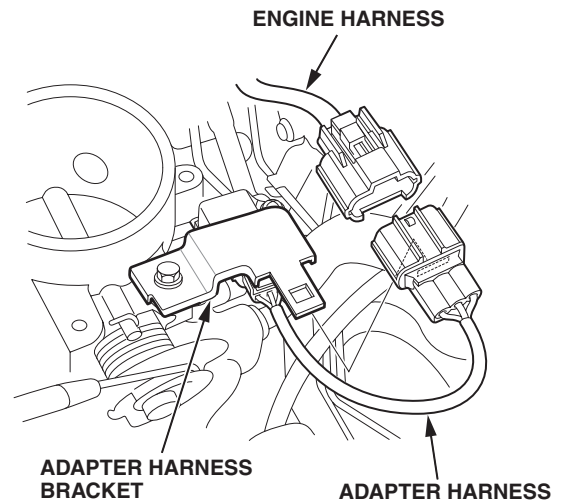
- Remove the MAP sensor and the O-ring from the throttle body (two washer-screws). Discard the sensor and the O-ring, but save the washer-screws.



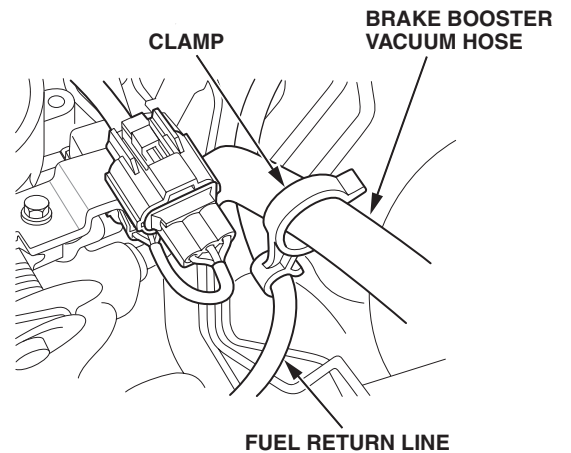
- Position the new O-ring on the throttle body. Then install the sensor spacer with the washer-screws you saved in step 9.
- Install the new MAP sensor on the sensor spacer (one washer-screw). Then plug the small (black) end of the adapter harness into the sensor.
- Install the adapter harness bracket on the throttle body (one flange bolt).



- Plug the large (gray) end of the adapter harness into the engine harness 3P connector. Slide the engine harness 3P connector onto the harness bracket until it clicks into place.



- Models with cruise control:* Reposition the vacuum hose and its clamp. Make sure the brake booster vacuum hose and the fuel return line do not interfere with each other.



- Clamp the engine harness in place.
- Reinstall the air cleaner.