



SERVICE BULLETIN

Classification: BT05-005a	Reference: NTB05-064a	Date: March 20, 2008
------------------------------	--------------------------	-------------------------

CENTER CONSOLE FRONT LID WILL NOT CLOSE

This bulletin has been amended. The Applied Vehicles have been updated.
Please discard earlier versions of this bulletin.

APPLIED VEHICLES: 2005 – 2006 Altima (L31)

IF YOU CONFIRM:

An applied vehicle has a Center Console Front Lid that will not stay closed (see Figure 1).



Figure 1

ACTION:

Install a new Linkage/Latch on the LH side of the Center Console Finisher.

- Refer to the Service Procedure for details.



Figure 2

Nissan Bulletins are intended for use by qualified technicians, not 'do-it-yourselfers'. Qualified technicians are properly trained individuals who have the equipment, tools, safety instruction, and know-how to do a job properly and safely. NOTE: If you believe that a described condition may apply to a particular vehicle, DO NOT assume that it does. See your Nissan dealer to determine if this applies to your vehicle.

IMPORTANT: The purpose of "ACTION" (on page 1) is to give you a quick idea of the work you will be performing. You **MUST** closely follow the entire Service Procedure as it contains information that is essential to successfully completing this repair.

PARTS INFORMATION

DESCRIPTION	PART NUMBER	QUANTITY
Latch – Console Lid	96927-ZB20A	1

CLAIMS INFORMATION

Submit a Primary Failed Part (PP) line claim using the following claims coding:

DESCRIPTION	PFP	OP CODE	SYM	DIA	FRT
RPL Center Console Front Lid Latch	(1)	VD12AA	FB	32	(2)

(1) Refer to the Parts Information Table and use the applicable Console Lid Latch P/N as the PFP.

(2) Reference the current Nissan Warranty Flat Rate Manual and use the indicated FRT.

SERVICE PROCEDURE

CAUTION: Use suitable covers to protect upholstery, carpet, trim, etc. when performing this procedure.

1. Remove the Center Console Finisher (see Figure 1).
 - Refer to **Section IP** of the applicable Service Manual for the removal procedure.

NOTE:

- In most cases, the old Linkage/Latch will be missing (fell off). If so, go to step #2.
- However, in some cases the old Latch may be present but damaged. If so, remove and discard the old Latch before going to step #2.

2. Install the new Linkage/Latch as follows:

- a. First, insert the top of the Latch into the Holder and over the Pivot Pin on the LH side of the Center Console Finisher (see Figure 3).

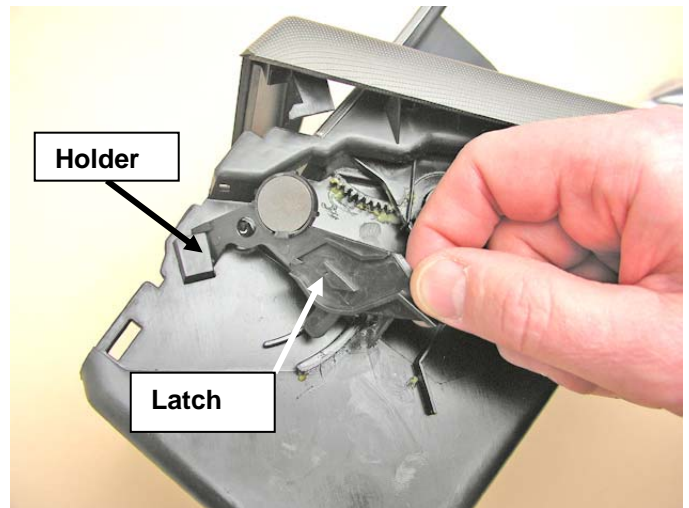


Figure 3

- b. Second, carefully pull down on the Slide Foot and insert it under the Slide Rail (see Figure 4).

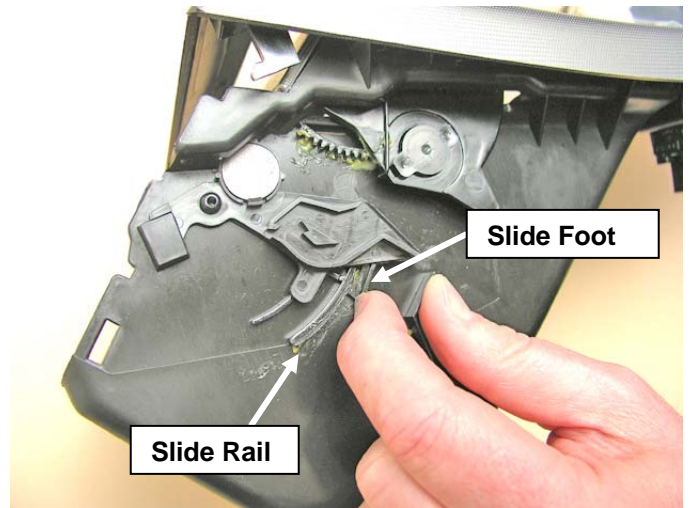


Figure 4

- c. Then, close the Front Lid and make sure its Catch Arm properly engages the Latch (see Figure 5).

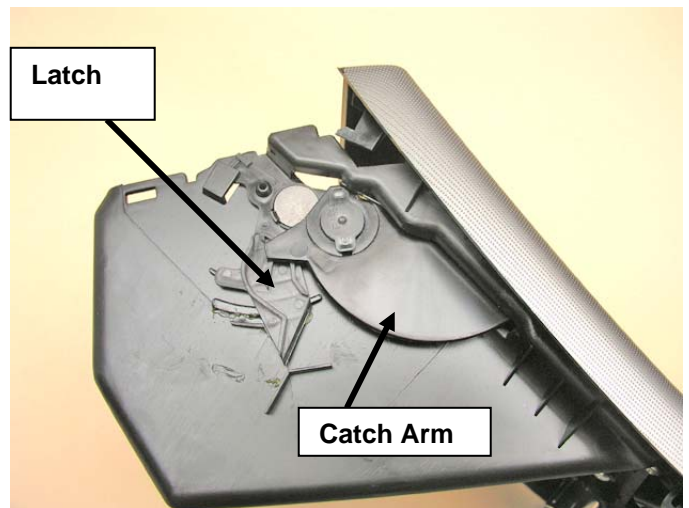


Figure 5

- d. Finally, operate the Front Lid a few times to make sure the lid operates (open, closes and latches) properly.

3. Re-install the Center Console in reverse of the order you removed it.