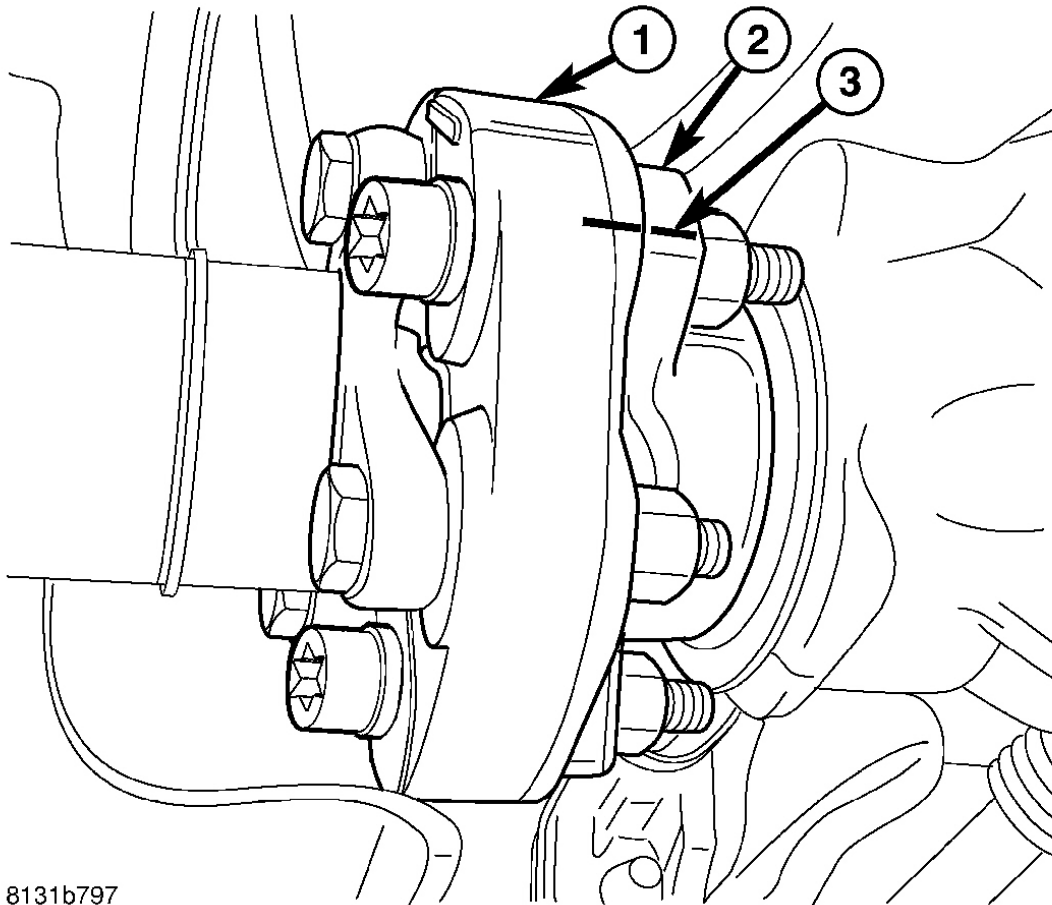


CAUTION: Propeller shaft removal is a two-man operation. Never allow propeller shaft to hang from the center bearing, or while only connected to the transmission or rear axle flanges. A helper is required. If a propeller shaft section is hung unsupported, damage may occur to the shaft, coupler, and/or center bearing from over-angulation. This may result in driveline vibrations and/or component failure.



8131b797

Fig. 5: Alignment Marks At Shaft And Flange

Courtesy of CHRYSLER LLC

1. With vehicle in neutral, position on hoist.
2. Apply alignment index marks (3) on the transmission and axle flanges (2) and rubber couplers (1).

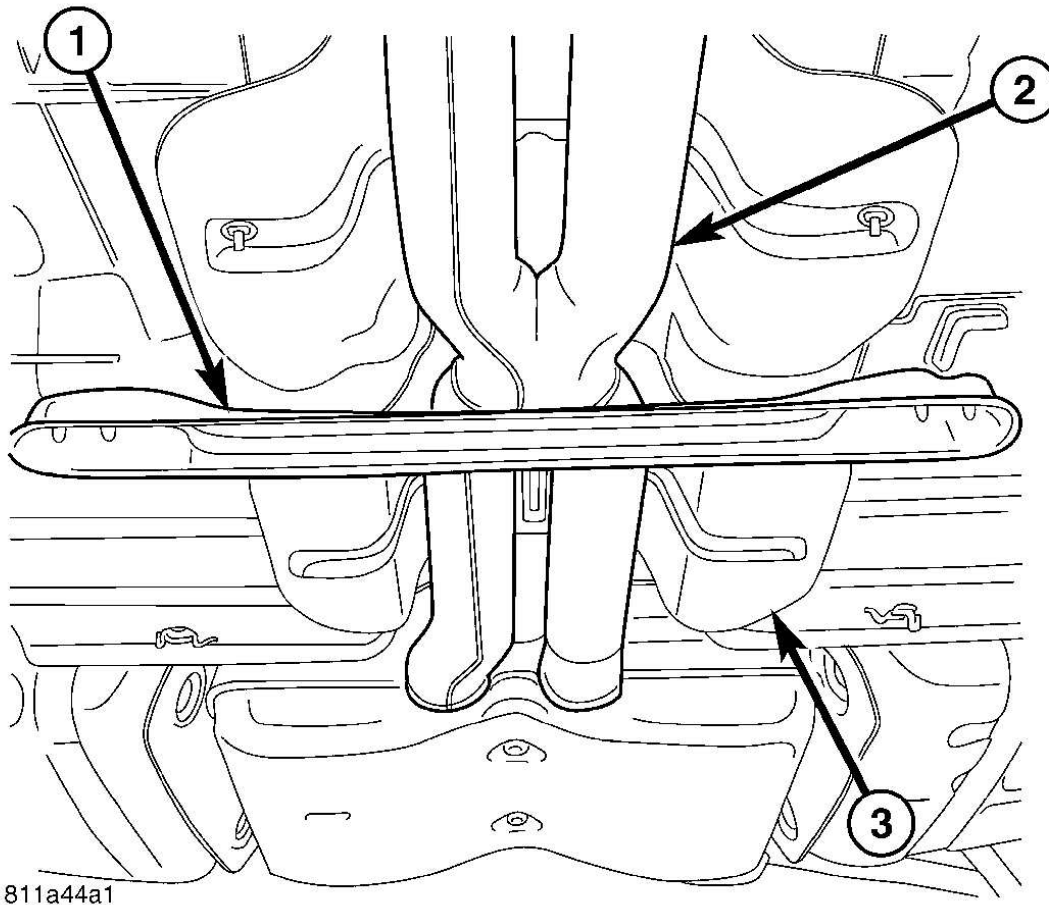
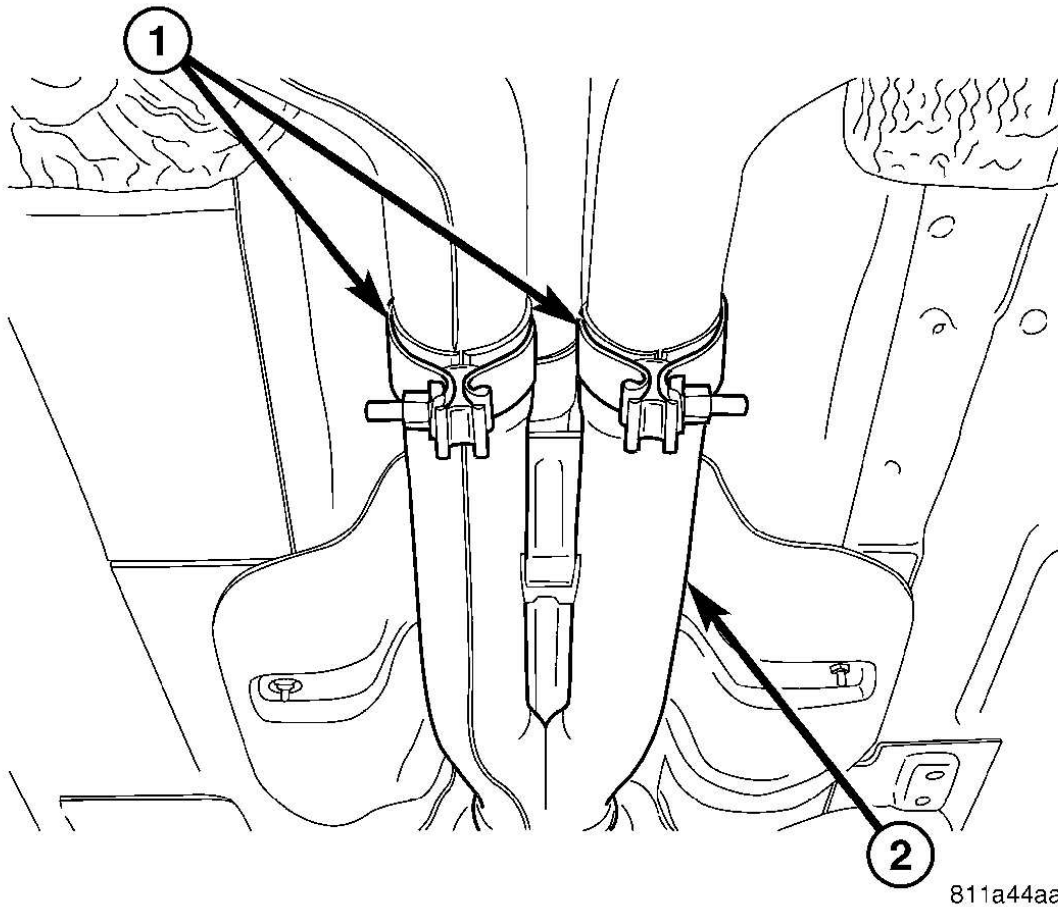


Fig. 6: Crossmember
Courtesy of CHRYSLER LLC

3. Remove crossmember (1).



811a44aa

Fig. 7: Identifying Clamps & Rear Exhaust System
Courtesy of CHRYSLER LLC

4. Remove rear exhaust system (2).

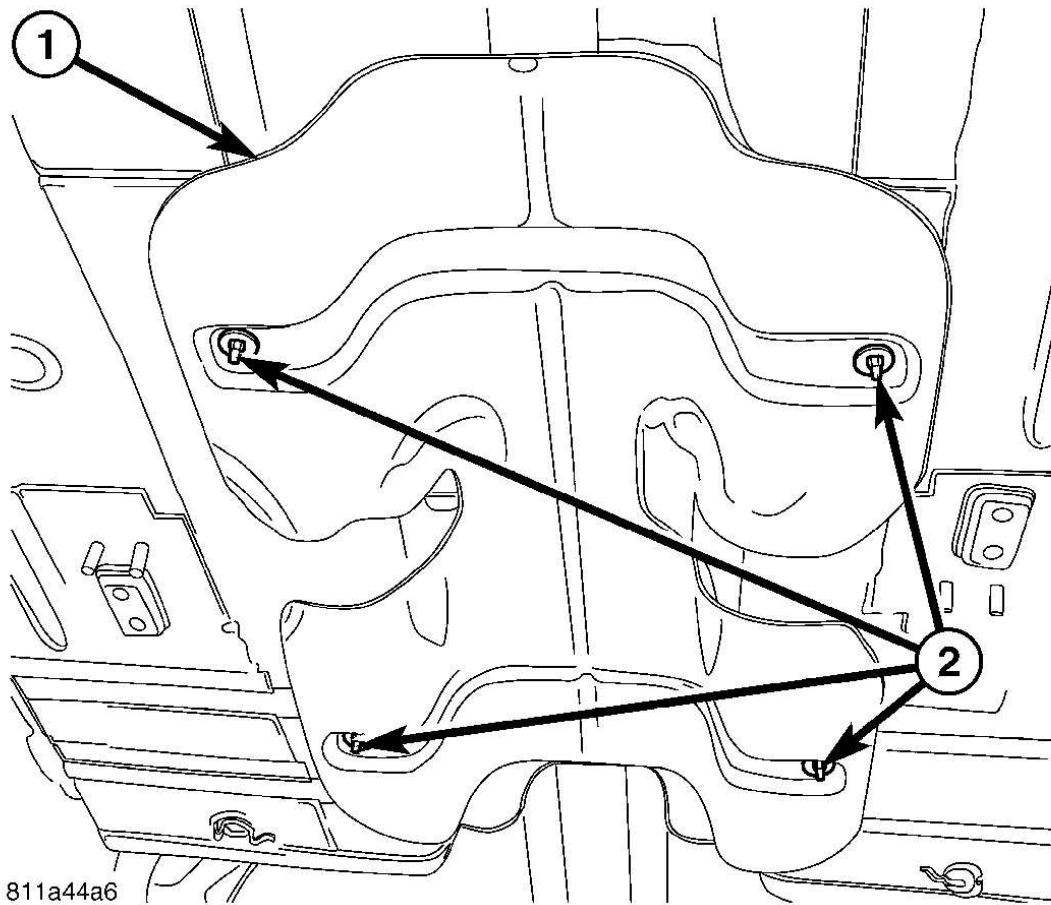
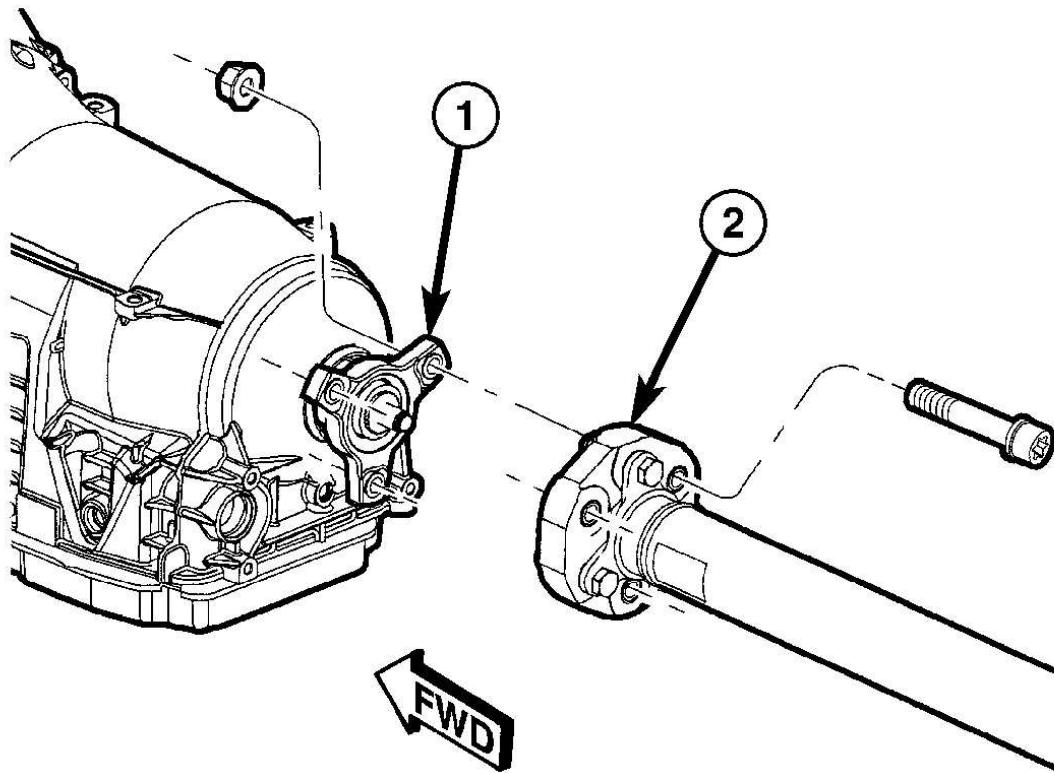


Fig. 8: Heat Shield
Courtesy of CHRYSLER LLC

5. Remove heat shield (1).

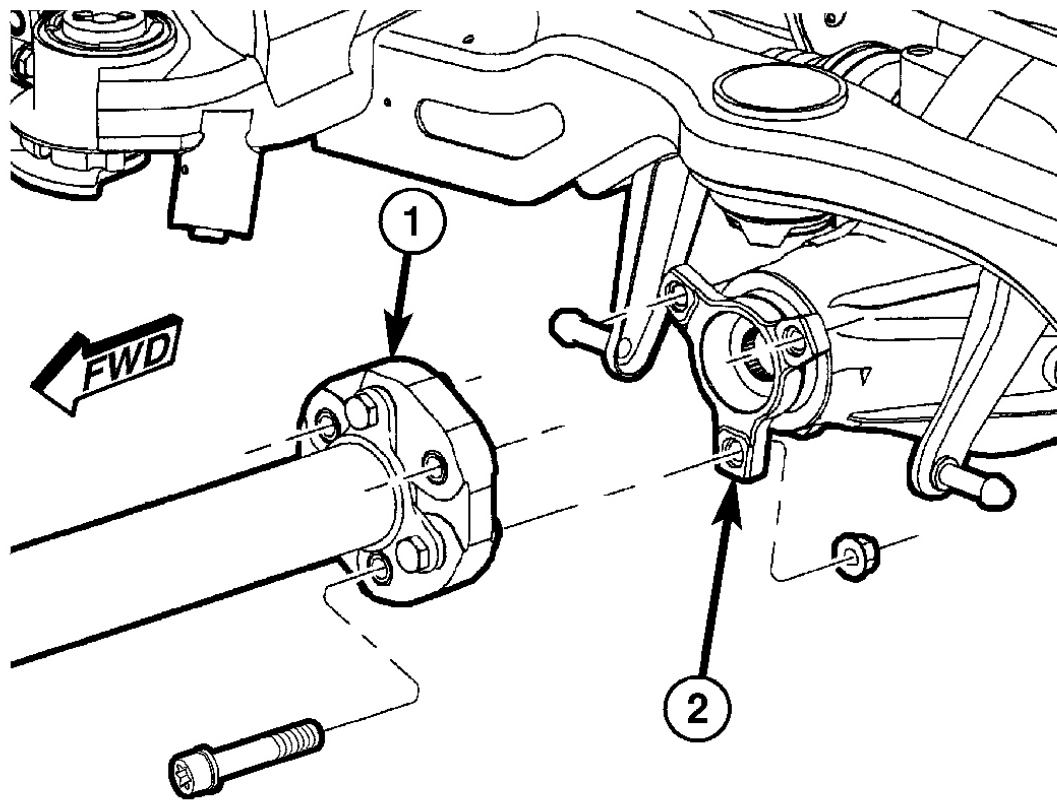


8131b7b2

Fig. 9: Propeller Shaft at Transmission
Courtesy of CHRYSLER LLC

- | |
|---|
| 1 - TRANSMISSION REAR FLANGE
2 - FRONT COUPLER |
|---|

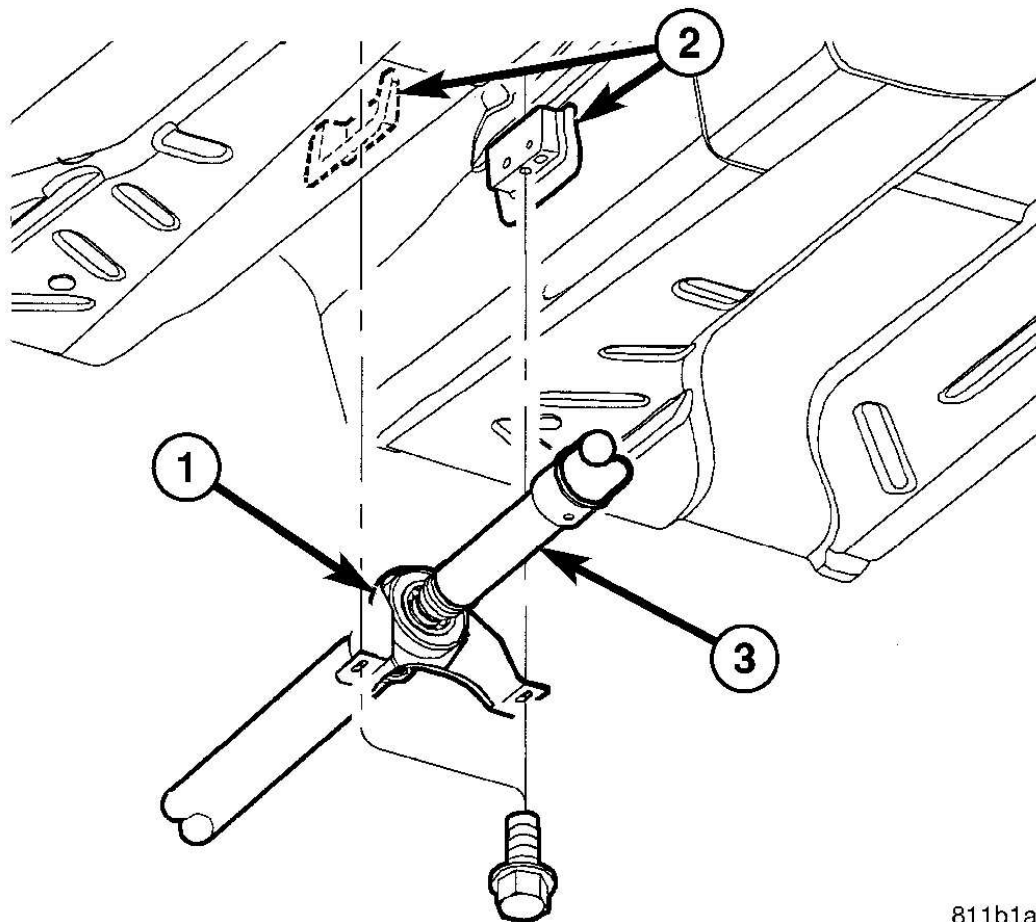
6. Remove propeller shaft front coupler-to-flange bolts.



8131b7b6

Fig. 10: Propeller Shaft At Rear Axle Flange
Courtesy of CHRYSLER LLC

7. Remove propeller shaft rear coupler-to-flange bolts.



811b1abc

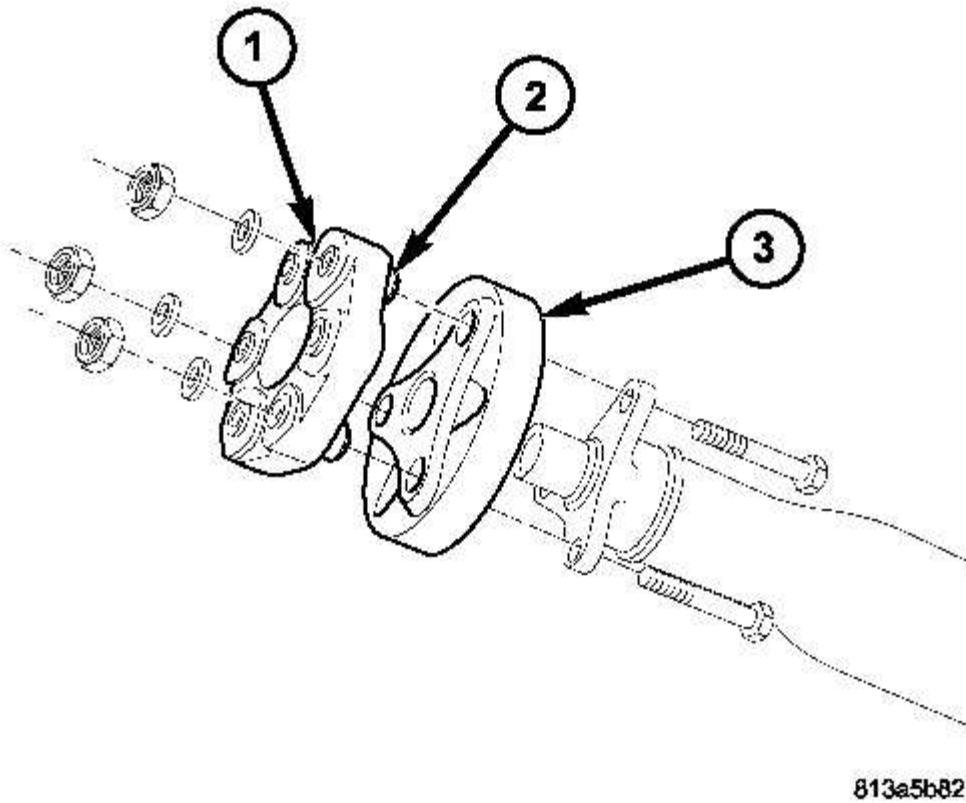
Fig. 11: Center Bearing-to-Body

Courtesy of CHRYSLER LLC

- | |
|---|
| 1 - CENTER BEARING
2 - CENTER BEARING MOUNT
3 - PROPELLER SHAFT |
|---|

8. Remove center bearing (1) mounting bolts.
9. With the aid of a helper, remove propeller shaft assembly.

COUPLER/DAMPER SERVICE



813a5b82

Fig. 12: Removing/Installing Damper

Courtesy of CHRYSLER LLC

1. Remove three coupler-to-propeller shaft bolt/nuts.
2. Separate coupler (1) and damper (3) (if equipped) from propeller shaft. Note orientation and direction of components. It is imperative that they are properly reinstalled.