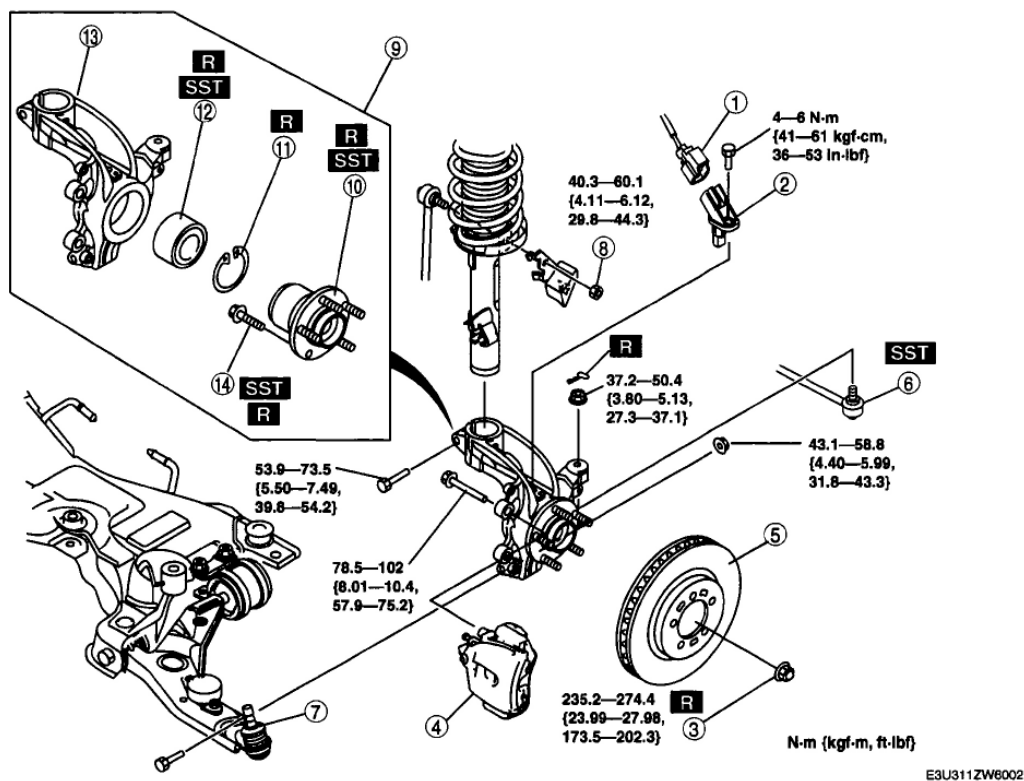


WHEEL HUB, STEERING KNUCKLE REMOVAL/INSTALLATION

- CAUTION:**
- Performing the following procedures without first removing the ABS wheel-speed sensor may possibly cause an open circuit in the wiring harness if it is pulled by mistake. Before performing the following procedures, disconnect the ABS wheel-speed sensor connector (axle side) and fix the wiring harness to an appropriate place where it will not be pulled by mistake while servicing the vehicle.

- Remove in the order indicated in the table.
- Install in the reverse order of removal.
- After installation, inspect the front wheel alignment and adjust it if necessary. (See [FRONT WHEEL ALIGNMENT](#)).



| | | | |
|---|----------------------------------|----|---------------------------------------|
| 1 | ABS wheel-speed sensor connector | 8 | Stabilizer control link upper nut |
| 2 | ABS wheel-speed sensor | 9 | Wheel hub, steering knuckle component |
| 3 | Locknut | 10 | Wheel hub component |
| 4 | Brake calliper component | 11 | Retaining clip |
| 5 | Disc plate | 12 | Wheel bearing |
| 6 | Tie-rod end ball joint | 13 | Steering knuckle |
| 7 | Front lower arm ball joint | 14 | Hub bolt |

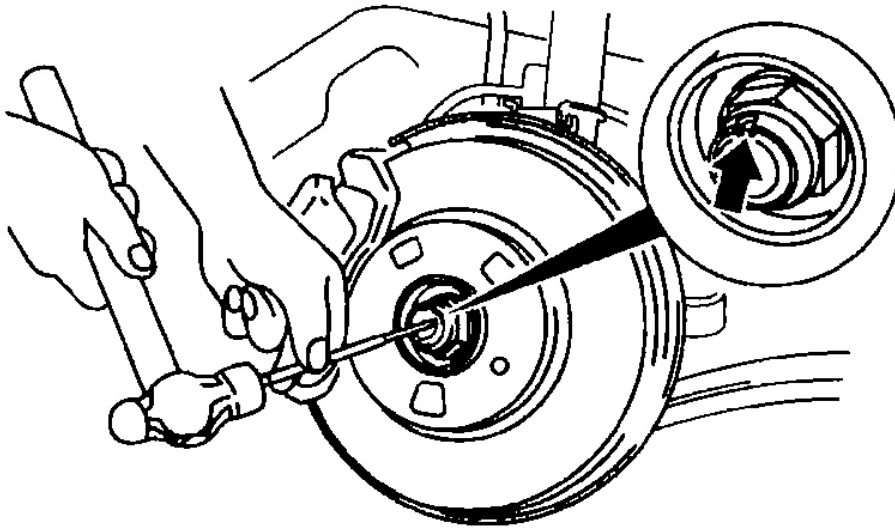
G04314062

Fig. 3: Wheel Hub/Steering Knuckle Components & Torque Specification

Courtesy of MAZDA MOTORS CORP.

LOCKNUT REMOVAL NOTE

1. Knock the crimped portion of the locknut outward using a small chisel and a hammer.
2. Lock the hub by applying the brakes.
3. Remove the locknut.

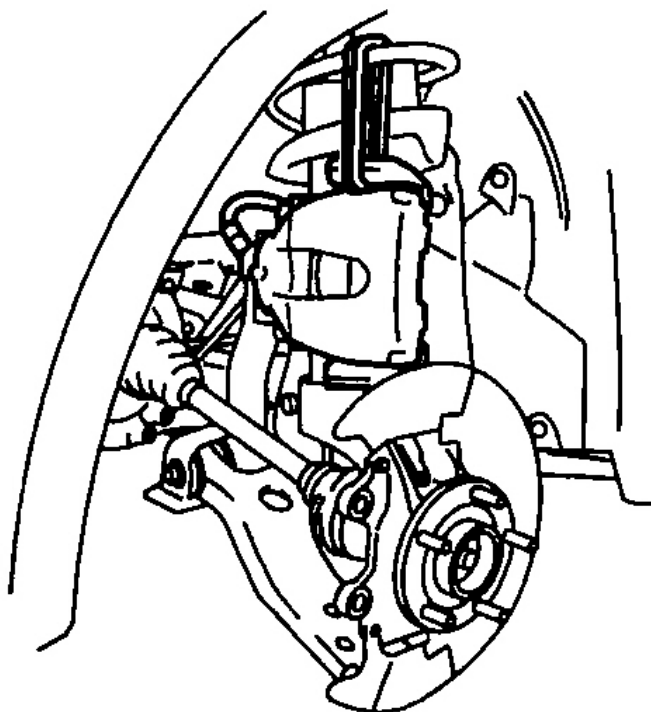


A6E6321W001

Fig. 4: Knocking Crimped Portion Of Locknut Outward Using Small Chisel And Hammer
Courtesy of MAZDA MOTORS CORP.

BRAKE CALIPER REMOVAL NOTE

1. Remove the brake caliper component from the steering knuckle and suspend it out of the way using a cable.

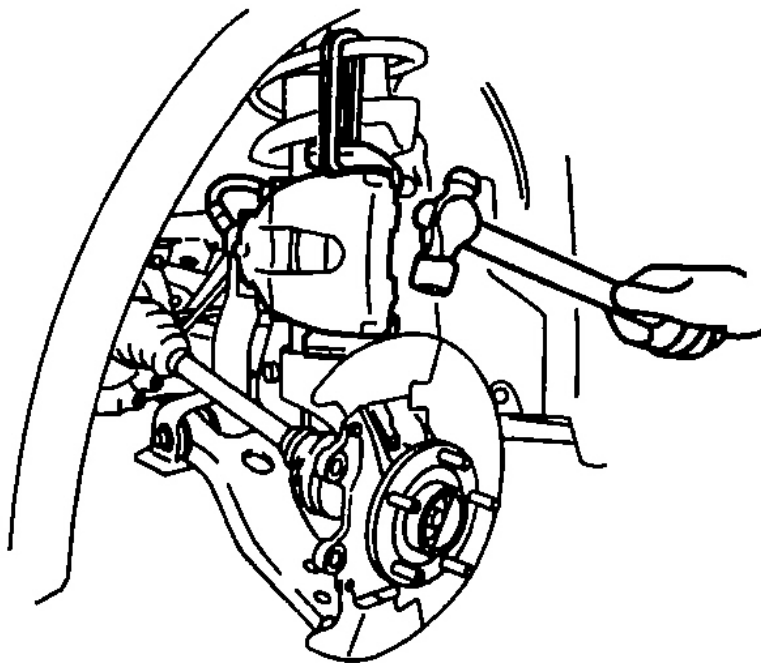


B3E0311W004

Fig. 5: Removing Brake Caliper
Courtesy of MAZDA MOTORS CORP.

WHEEL HUB, STEERING KNUCKLE COMPONENT REMOVAL NOTE

1. Separate the shock absorber from the wheel hub, steering knuckle component by tapping the upper part of the steering knuckle with a hammer.

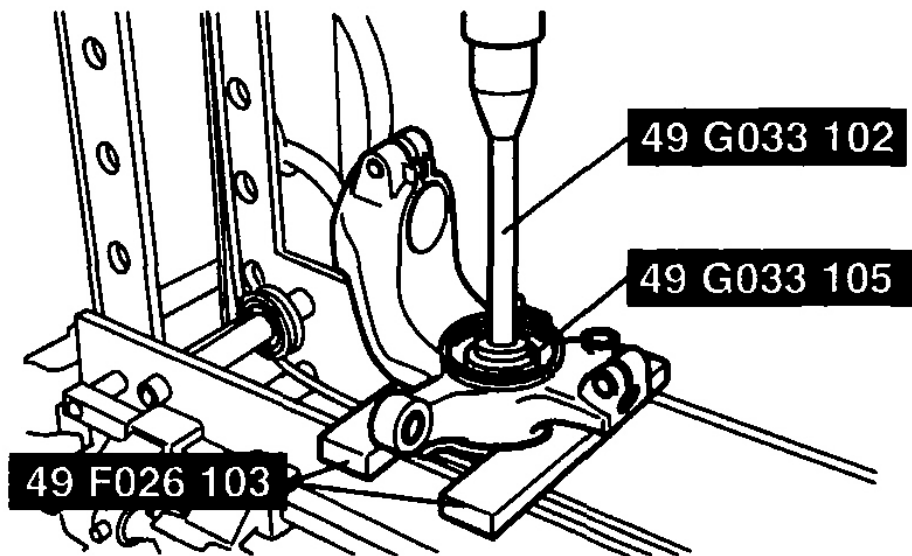


B3E0311W500

Fig. 6: Separating Shock Absorber From Wheel Hub, Steering Knuckle Component
Courtesy of MAZDA MOTORS CORP.

WHEEL HUB COMPONENT REMOVAL NOTE

1. Remove the wheel hub component using the SSTs .



CPJ311ZWB004

Fig. 7: Removing Wheel Hub Component
Courtesy of MAZDA MOTORS CORP.

2. If the bearing inner race remains on the front wheel hub component, remove the bearing inner race using the SSTs .

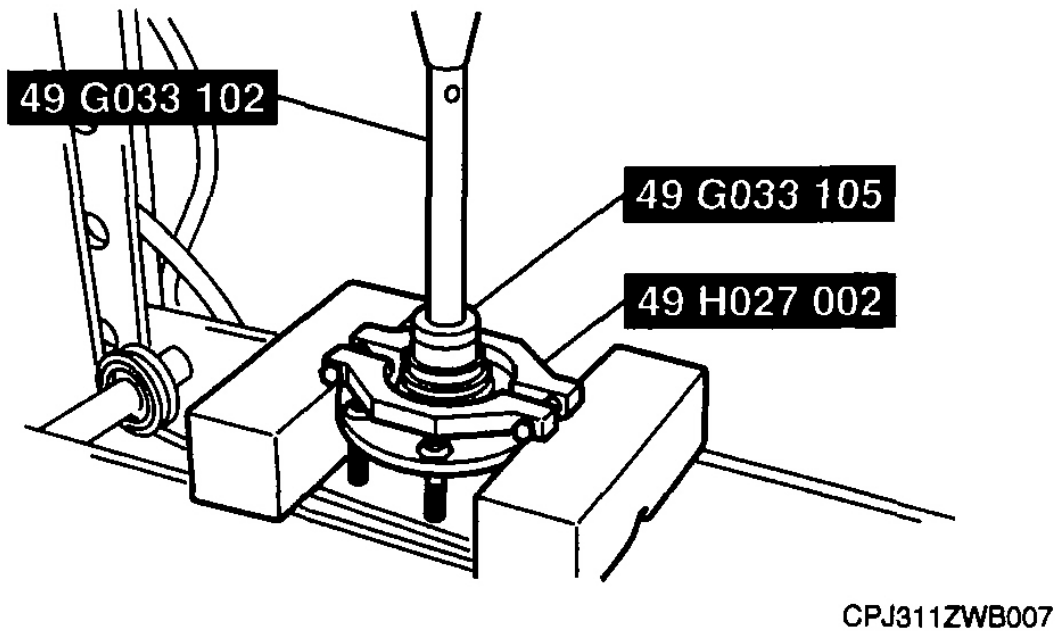
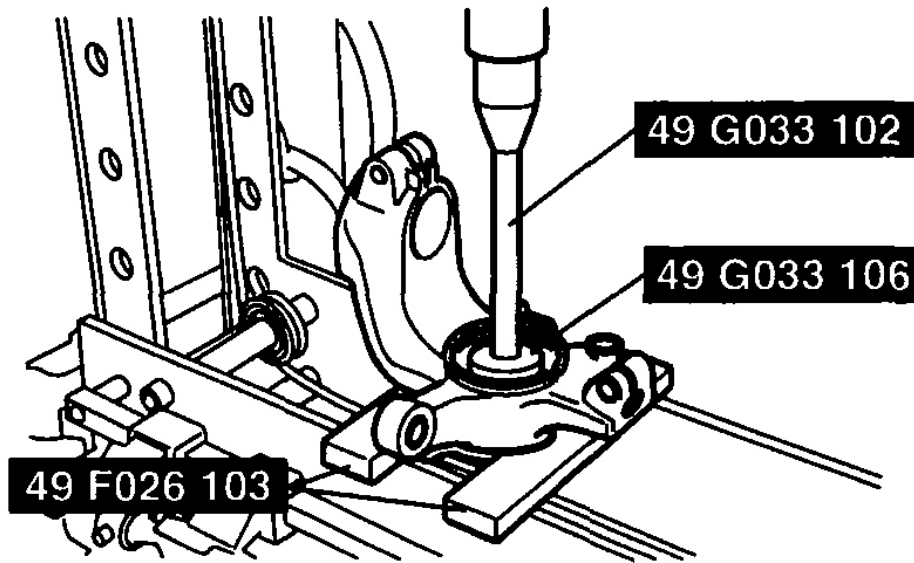


Fig. 8: Removing Bearing Inner Race
Courtesy of MAZDA MOTORS CORP.

WHEEL BEARING REMOVAL NOTE

1. Remove the wheel bearing using the SSTs .



CPJ311ZWB002

Fig. 9: Removing Wheel Bearing
Courtesy of MAZDA MOTORS CORP.