

CYLINDER HEAD GASKET

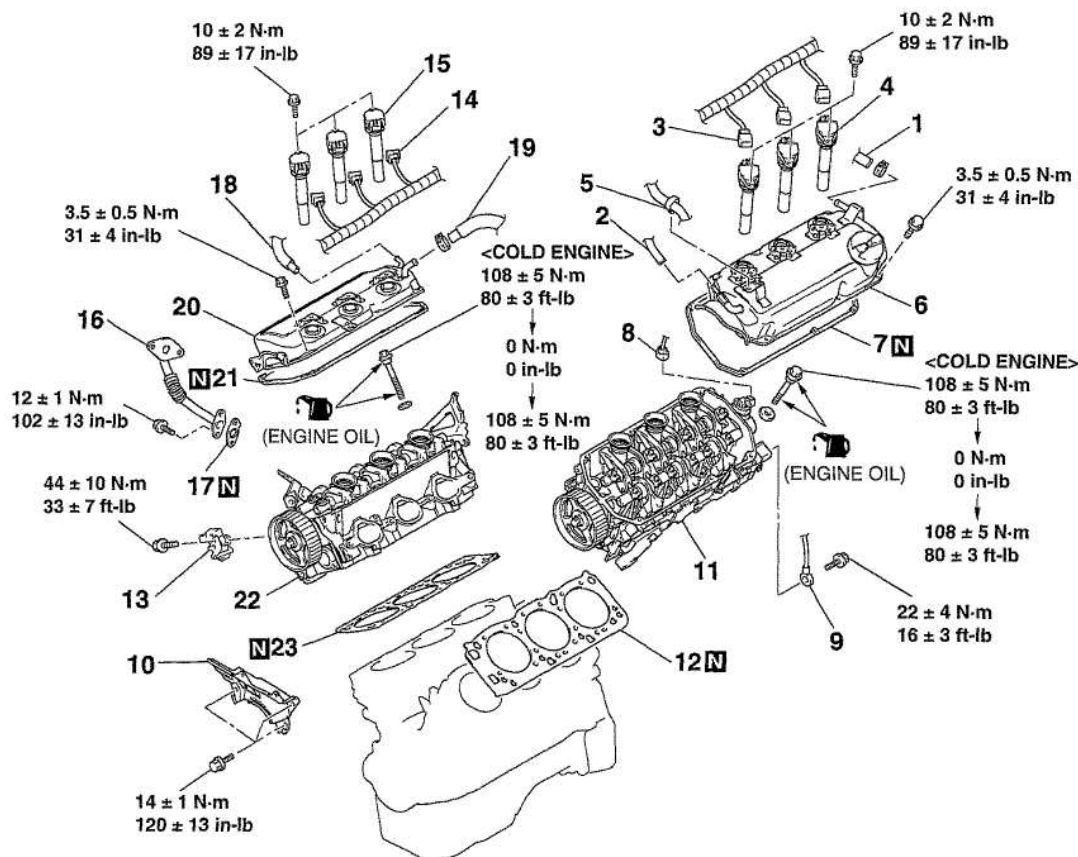
REMOVAL AND INSTALLATION

2004 Mitsubishi Endeavor LS

2004 ENGINE Engine - Endeavor

Pre-removal and Post-installation Operation

- Intake Manifold Removal and Installation
- Exhaust Manifold Removal and Installation
- Timing Belt Removal and Installation
- Thermostat Housing Removal and Installation
- Generator Removal and Installation



REMOVAL STEPS

- | | |
|--|--|
| 1. BLOW-BY HOSE CONNECTION | 13. POWER STEERING OIL PUMP BRACKET ASSEMBLY |
| 2. PCV HOSE CONNECTION | 14. IGNITION COIL CONNECTOR |
| 3. IGNITION COIL CONNECTOR | 15. IGNITION COIL |
| 4. IGNITION COIL | 16. EGR PIPE B |
| 5. ENGINE CONTROL WIRING HARNESS CLAMP | 17. GASKET |
| 6. ROCKER COVER | 18. BREATHER HOSE CONNECTION |
| 7. ROCKER COVER GASKET | 19. BLOW-BY HOSE CONNECTION |
| 8. CAMSHAFT POSITION SENSOR CONNECTOR | 20. ROCKER COVER |
| 9. GROUNDING | 21. ROCKER COVER |
| 10. TIMING BELT REAR CENTER COVER | 22. RIGHT BANK CYLINDER HEAD ASSEMBLY |
| 11. LEFT BANK CYLINDER HEAD ASSEMBLY | 23. CYLINDER HEAD GASKET |
| 12. CYLINDER HEAD GASKET | |

G00853209

Fig. 82: Removing/Installing Cylinder Head Gasket
 Courtesy of MITSUBISHI MOTOR SALES OF AMERICA.

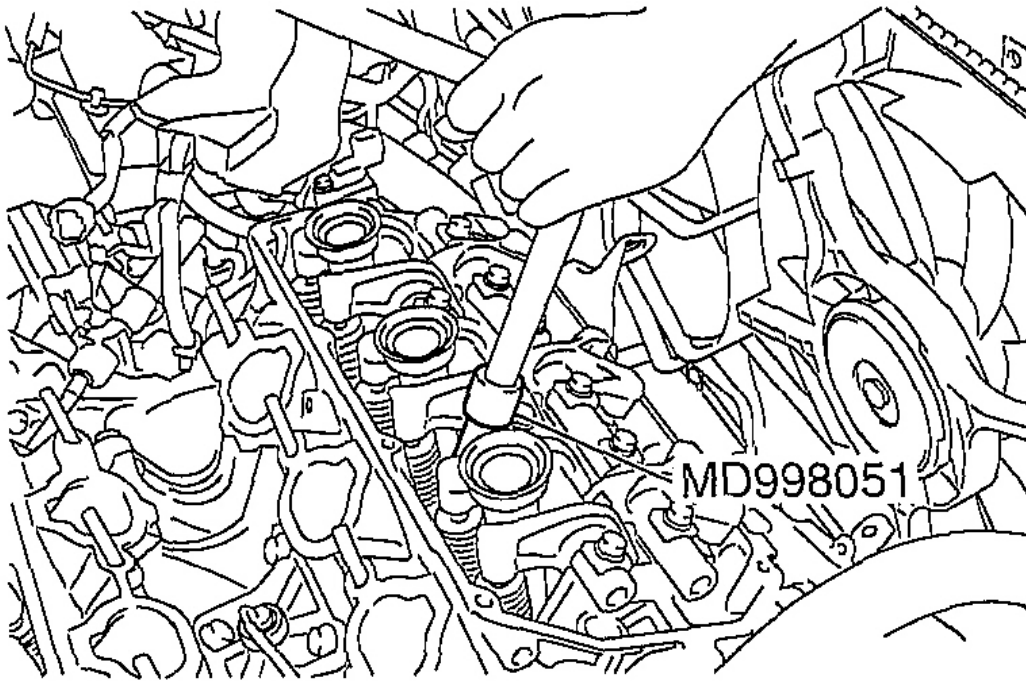
Required Special Tool:

- MD998051: Cylinder Head Bolt Wrench

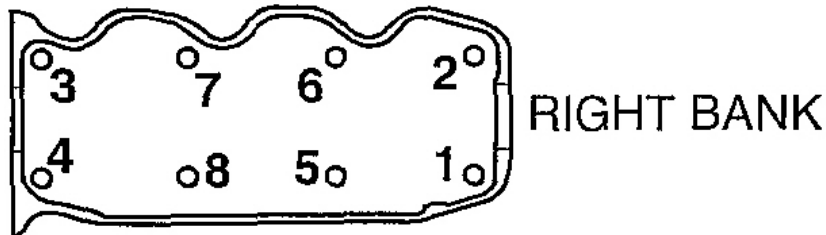
REMOVAL SERVICE POINT

<< A >> CYLINDER HEAD ASSEMBLY REMOVAL

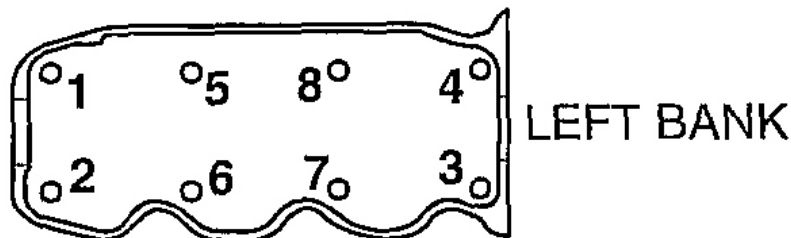
Use special tool MD998051 to loosen each bolt two or three steps in the order shown in the illustration.



EXHAUST SIDE



INTAKE SIDE



EXHAUST SIDE

G00853210

Fig. 83: Removing Cylinder Head

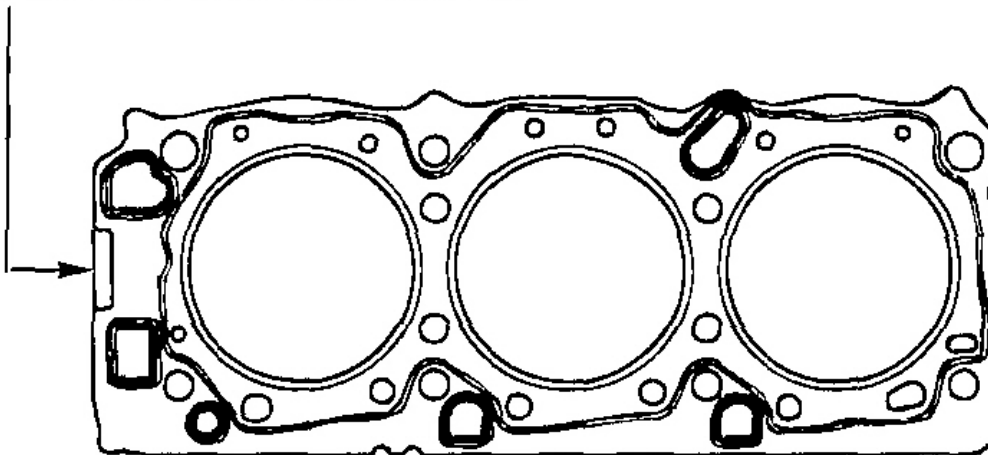
Courtesy of MITSUBISHI MOTOR SALES OF AMERICA.

INSTALLATION SERVICE POINTS

>>A<< CYLINDER HEAD GASKET INSTALLATION

1. Degrease the cylinder head and cylinder block gasket mounting surfaces.
2. Make sure that the gasket has the proper identification mark for the engine.

IDENTIFICATION MARK



G00853211

Fig. 84: Identifying Cylinder Head Gasket On Cylinder Block With Identification Mark At Front Top

Courtesy of MITSUBISHI MOTOR SALES OF AMERICA.

3. Lay the cylinder head gasket on the cylinder block with the identification mark at the front top.

>>B<< CYLINDER HEAD ASSEMBLY INSTALLATION

CAUTION: Be careful that no foreign material gets into the cylinder, coolant passages or oil passages. Engine damage may result.

1. Use a scraper to clean the gasket surface of the cylinder head assembly.

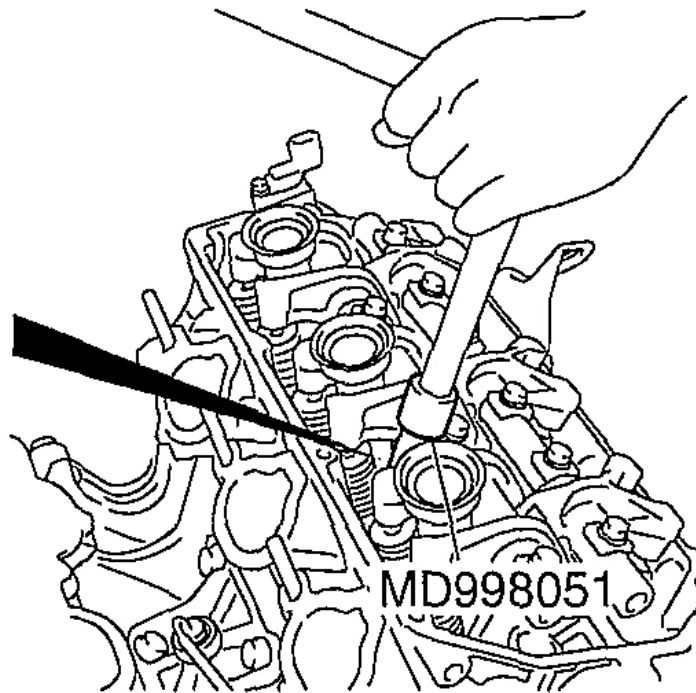
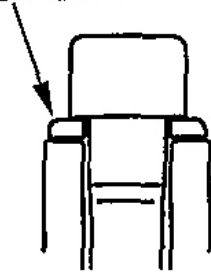
CAUTION: Install the head bolt washers with the beveled side facing upwards as

shown in the illustration.

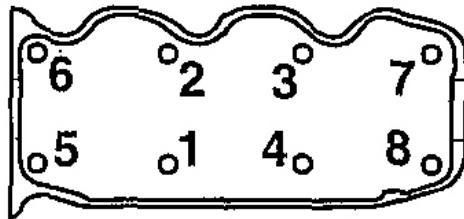
- Using special tool MD998051 and a torque wrench, tighten the bolts to the specified torque in the order shown in the illustration. (in two or three cycles)

Tightening torque: 108 +/- 5 N.m (80 +/- 3 ft-lb) +/- 0 N.m (0 in-lb) +/- 108 +/- 5 N.m (80 +/- 3 ft-lb)

CYLINDER
HEAD BOLT
WASHER

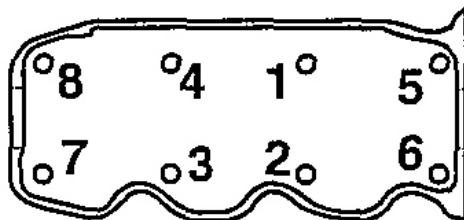


EXHAUST SIDE



RIGHT BANK

INTAKE SIDE



LEFT BANK

EXHAUST SIDE

G00853212

Fig. 85: Tightening Bolts

Courtesy of MITSUBISHI MOTOR SALES OF AMERICA.