



# Engine Control Module/Powertrain Control Module (ECM/PCM)

NOTE: If this symptom is intermittent, check for a loose fuse No. 1 (BACK UP LIGHTS, METER LIGHTS, 10 A) in the under-dash fuse/relay box, a poor connection at ECM/PCM terminal A18, or an intermittent open in the LT GRN/RED wire between the ECM/PCM (A18) and the gauge assembly.

The Malfunction Indicator Lamp (MIL) never comes on (even for two seconds) after ignition is turned on.

Turn the ignition switch ON (II).

Is the low oil pressure light on?

NO

- Repair short or open in the wire between NO. 1 (BACK-UP LIGHTS, METER LIGHTS) (10 A) fuse and gauge assembly.
- Replace No. 1 (BACK-UP LIGHTS, METER LIGHTS) (10 A) fuse.

YES

Try to start the engine.

Does the engine start?

NO

YES

Check for an open in the wire or bulb (MIL line):

1. Turn the ignition switch OFF.
2. Connect the ECM/PCM connector terminal A18 to body ground with a jumper wire.
3. Turn the ignition switch ON (II).

Check for an open in the wires:

1. Turn the ignition switch ON (II).
2. Measure voltage between body ground and ECM/PCM connector terminals A10 and A23 individually.

Is there less than 1.0V?

NO

Repair open in the wire(s) between ECM/PCM and G101 (located at the left side of the intake manifold) that had more than 1.0V.

YES

Substitute a known-good ECM/PCM and recheck. If symptom/indication goes away, replace the original ECM/PCM.

Is the MIL on?

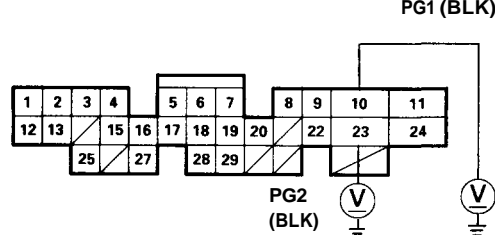
NO

- Repair open in the wires between ECM/PCM (A18) and gauge assembly.
- Replace the MIL bulb.

YES

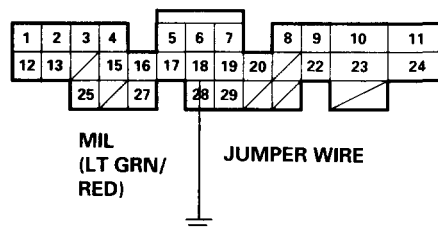
Substitute a known-good ECM/PCM and recheck. If symptom/indication goes away, replace the original ECM/PCM.

ECM/PCM CONNECTOR A (32P)



WIRE SIDE OF FEMALE TERMINALS

ECM/PCM CONNECTOR A (32P)



WIRE SIDE OF FEMALE TERMINALS

(cont'd)

# PGM-FI System

## Engine Control Module/Powertrain Control Module (ECM/PCM) (cont'd)

**The Malfunction Indicator Lamp (MIL) stays on or comes on after two seconds.**

**Check the Diagnostic Trouble Code (DTC):**  
 1. Connect a scan tool or Honda PGM Tester.  
 2. Turn the ignition switch ON (II).  
 3. Read the DTC with the scan tool or Honda PGM Tester.

Are any DTC(s) indicated?

**Go to troubleshooting procedures.**  
 (see page 11-32)

**Check the DTC by MIL indication:**  
 1. Turn the ignition switch OFF.  
 2. Connect the SCS service connector to the service check connector.  
 3. Turn the ignition switch ON (II).

Does the MIL indicate any DTC?

— Repair open or short in wire between the ECM/PCM (C8) and Data Link Connector.  
 — Go to troubleshooting procedures, (see page 11-32)

Try to start the engine.

Does the engine start?

(To page 11-53)

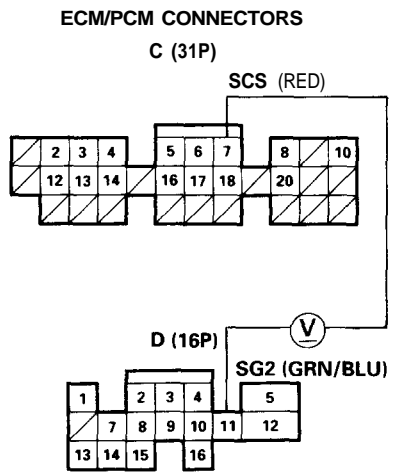
**Check for a short in the wires (SCS):**  
 1. Stop the engine and turn the ignition switch ON (II).  
 2. Measure voltage between the ECM/PCM connector terminal C7 and D11.

Is there approx. 5 V?

**Repair short to body ground in the wire between ECM/PCM (C7) and service check connector.**

(To page 11-53)

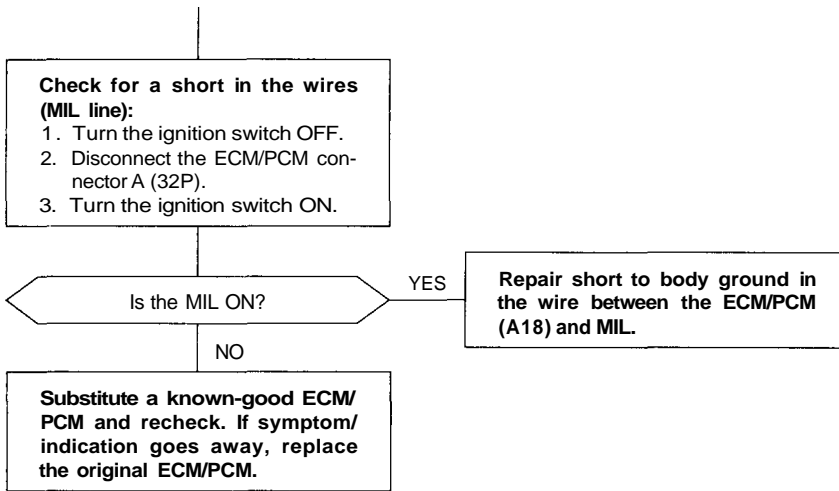
- NOTE:**
- When there is no Diagnostic Trouble Code (DTC) stored, the MIL will stay on if the SCS service connector is connected and the ignition switch is on.
  - If this symptom is intermittent, check for:
    - A loose ECU (ECM) (15 A) fuse in the under-hood fuse/relay box
    - A loose No. 2 FUEL PUMP fuse (15 A) in the under-dash fuse/relay box
    - An intermittent short in the wire between the ECM/PCM (C7) and the service check connector
    - An intermittent open in the wire between the ECM/PCM (D11) and the service check connector
    - An intermittent short in the wire between the ECM/PCM (A18) and the gauge assembly
    - An intermittent short in the wire between the ECM/PCM (D4) and the MAP sensor
    - An intermittent short in the wire between the ECM/PCM (D10) and the TP sensor, EGR valve lift sensor, Fuel tank pressure sensor (Sedan KA (EX), KL (DX, LX with ABS, EX), KC (EXR), Coupe models)
  - See the OBD-II scan tool or Honda PGM Tester user's manuals for specific operating instructions.



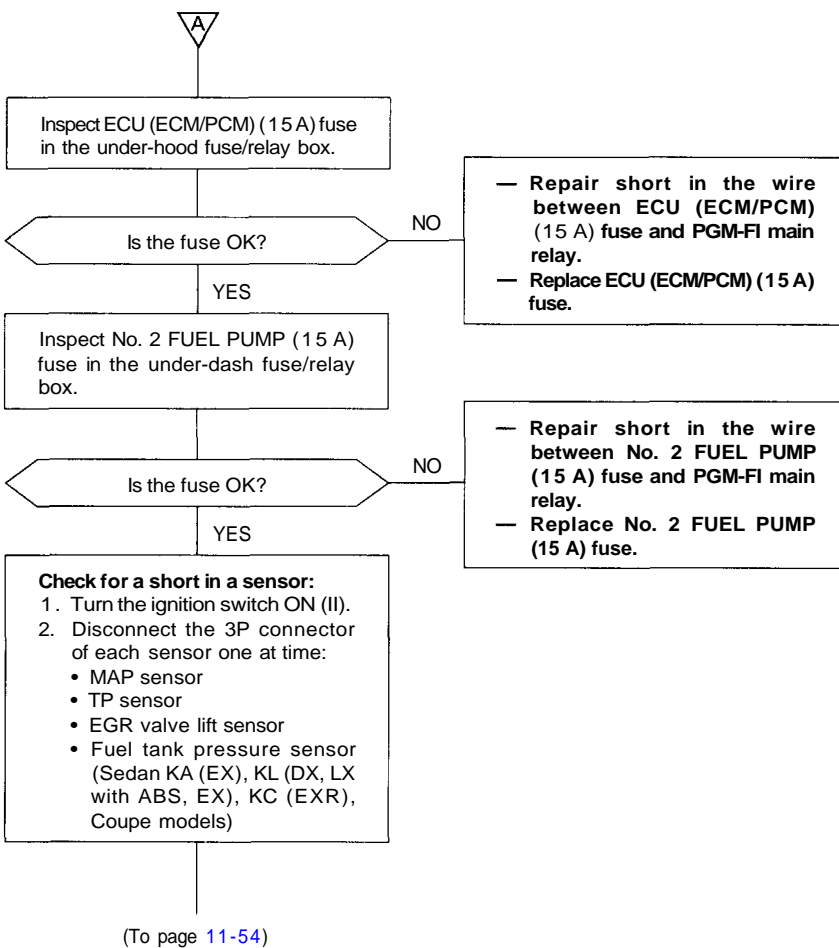
**WIRE SIDE OF FEMALE TERMINALS**



(From page 11-52)



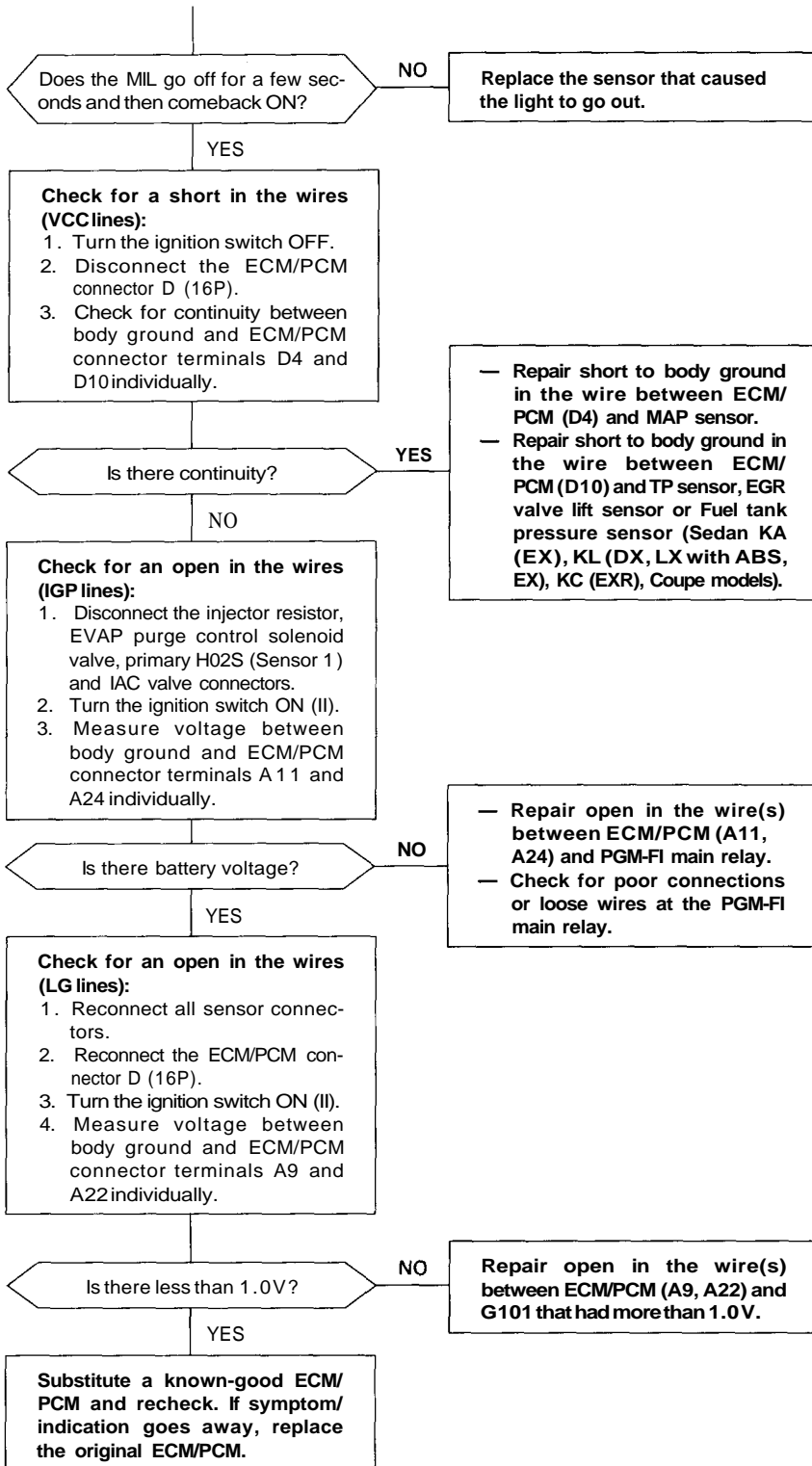
(From page 11-52)



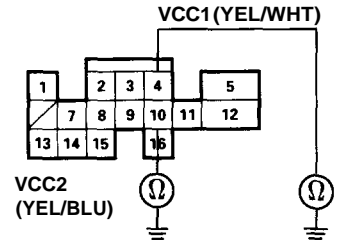
(cont'd)

## Engine Control Module/Powertrain Control Module (ECM/PCM) (cont'd)

(From page 11-53)

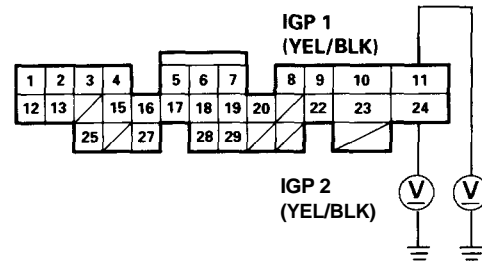


ECM/PCM CONNECTOR D (16P)



WIRE SIDE OF FEMALE TERMINALS

ECM/PCM CONNECTOR A (32P)



WIRE SIDE OF FEMALE TERMINALS

