

2001 Dodge Stratus ES

2001 ACCESSORIES & EQUIPMENT' Power Door Locks & Remote Keyless Entry Systems - Sebring Convertible, Sebring Sedan & Stratus Sedan

2001 ACCESSORIES & EQUIPMENT

Power Door Locks & Remote Keyless Entry Systems - Sebring Convertible, Sebring Sedan & Stratus Sedan

DESCRIPTION & OPERATION

POWER DOOR LOCKS

Power door lock system allows all doors to be locked or unlocked using either front door lock switch. All doors can be mechanically locked or unlocked using respective locking knobs or from outside of vehicle using key. Driver's or passenger's door can also be unlocked by actuating inside door handle. On Sebring Convertible, trunk can be unlocked using switch inside vehicle.

All 4-door models are equipped with child protection locks on rear doors. Lever is located on inside edge of door, near latch. Moving lever to engage lock will allow rear door to only be opened using outside door handle.

On models with anti-theft system, power door lock system is integrated into anti-theft system. See ANTI-THEFT SYSTEMS - SEBRING CONVERTIBLE, SEBRING SEDAN & STRATUS SEDAN article. Locking or unlocking door with key will arm or disarm anti-theft system (if equipped), and cancel or activate illuminated entry feature. An optional central locking system is also a part of anti-theft system. Turning key in driver's door to unlock position one time will unlock driver's door. Unlocking passenger's door with a key or turning driver's door lock to unlock position 2 times within 5 seconds will unlock all doors.

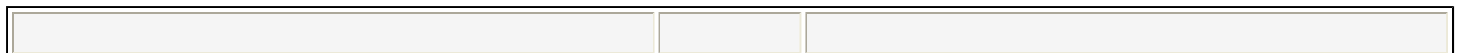
All models are equipped with a door lock inhibit function. Body Control Module (BCM) will ignore command to lock power door locks with ignition switch in ON position and driver's door open. When door is closed or ignition key is removed, BCM will lock all door locks.

All models are also equipped with automatic door locks. Doors will lock automatically when all doors are closed, vehicle speed exceeds 14-16 MPH and Throttle Position (TP) sensor is greater than 8-12 degrees. This feature can be enabled or disabled. If door lock switch is pressed for longer than eight consecutive seconds, BCM will disable door lock relay. Power latches are equipped with a thermal protection system which prevents latches from burning out.

REMOTE KEYLESS ENTRY

Remote Keyless Entry (RKE) system allows for locking and unlocking of vehicle doors and opening of trunk by remote control, using a hand-held radio transmitter. RKE module (receiver), which is integrated into Body Control Module (BCM), may receive signals from up to 4 transmitters. Each transmitter has its own ID and a rolling code which is stored in BCM memory. Transmit ID of each transmitter never changes. Rolling code changes each time a button is pressed. If transmitter is replaced, or another added, ID code from all units has to be programmed into BCM memory. See **RKE TRANSMITTER** under PROGRAMMING.

Transmitter will operate within approximately 23 ft. (7 m) of receiver. If transmitter button is pressed more than 250 times out of vehicle range, rolling code will go out of synchronization and must be re-synchronized. See **CUSTOMER LEARN METHOD** under RKE TRANSMITTER under PROGRAMMING. Receiver is capable of retaining memory even when power is removed. Transmitter has 2 replaceable 3-volt batteries



2001 Dodge Stratus ES

2001 ACCESSORIES & EQUIPMENT' Power Door Locks & Remote Keyless Entry Systems - Sebring Convertible, Sebring Sedan & Stratus Sedan

(CR2016).

Pressing UNLOCK button once unlocks driver's door and enables illuminated entry. Pressing UNLOCK button twice within 5 seconds unlocks all doors. When LOCK button is pressed, horn will sound, signaling that "lock both doors" signal was received and set. Illuminated entry operation is canceled and all interior lights will turn off. When PANIC button is pressed for more than one second, panic mode is enabled. Driver's door unlocks, interior lights come on, horn sounds and headlights flash approximately once per second. Panic mode can be cancelled by pressing UNLOCK button, after vehicle reaches 15 MPH or it automatically resets after three minutes. When trunk release button is pressed, trunk opens without disarming Vehicle Theft Security System (VTSS). For additional information about VTSS, see ANTI-THEFT SYSTEMS - SEBRING CONVERTIBLE, SEBRING SEDAN & STRATUS SEDAN article.

COMPONENT LOCATIONS

COMPONENT LOCATIONS

Component	Location
Body Control Module (BCM)	Attached To Junction Block
Trunk Release Relay	On Right Side Of Brake Pedal Mounting Bracket, Behind Courtesy Light Relay
Junction Block	Behind Driver Side Instrument Panel Endcap
Power Distribution Center (PDC)	Next To Battery

PROGRAMMING

AUTOMATIC DOOR LOCKS ENABLED/DISABLED

Close all doors. Place ignition switch in OFF position for at least 20 seconds. Cycle ignition switch from OFF to RUN position 4 times, without cranking engine, ending in OFF position. Using power door lock switch, lock all doors. If system is being disabled, a single chime should sound to indicate that feature has been changed successfully. If chime did not sound, repeat procedure. If system is being enabled, chime should not sound.

RKE TRANSMITTER

Transmitter code will lose synchronization if transmitter buttons are pressed more than 250 times when transmitter is out of range of receiver. If one remote transmitter is already programmed, use customer learn method. See [CUSTOMER LEARN METHOD](#) . If no remote transmitters are programmed, use scan tool method. See [SCAN TOOL METHOD](#) .

Scan Tool Method

Connect scan tool to Data Link Connector (DLC). Following scan tool manufacturer's instructions, program remote transmitter and/or Remote Keyless Entry (RKE) module.

Customer Learn Method

--	--	--

2001 Dodge Stratus ES

2001 ACCESSORIES & EQUIPMENT' Power Door Locks & Remote Keyless Entry Systems - Sebring Convertible, Sebring Sedan & Stratus Sedan

NOTE: Once program mode is entered you will only have 30 seconds to complete programming of all transmitters.

Ensure at least one RKE transmitter is programmed for this vehicle. If no remote transmitters are programmed, use scan tool method. See **SCAN TOOL METHOD**. Ensure vehicle is in Park. Turn ignition on. Using customer's transmitter, press and hold UNLOCK button for at least 4 seconds, but not more than 10 seconds, then press and hold PANIC for at least one second and release both buttons simultaneously. Chime should sound, indicating system is ready to accept new transmitter(s). Press and release LOCK and UNLOCK buttons simultaneously, then press any button on new transmitter(s) (including original transmitter). Each time a transmitter code is accepted, a chime will sound. Turn ignition off to complete programming.

ADJUSTMENTS

TRUNK LATCH

Adjust trunk latch and striker so trunk latches with a moderate slam. Push trunk release switch and trunk should release. Should latch fail to lock or unlock, replace latch assembly.

DOOR LATCH

Insert Allen wrench through elongated slot in door end frame, and loosen bolt 1/2 to one full turn. See **Fig. 1**. Cycle outside door handle 2 times. Tighten adjusting screw and verify latch operation before closing door.



2001 Dodge Stratus ES

2001 ACCESSORIES & EQUIPMENT' Power Door Locks & Remote Keyless Entry Systems - Sebring Convertible, Sebring Sedan & Stratus Sedan

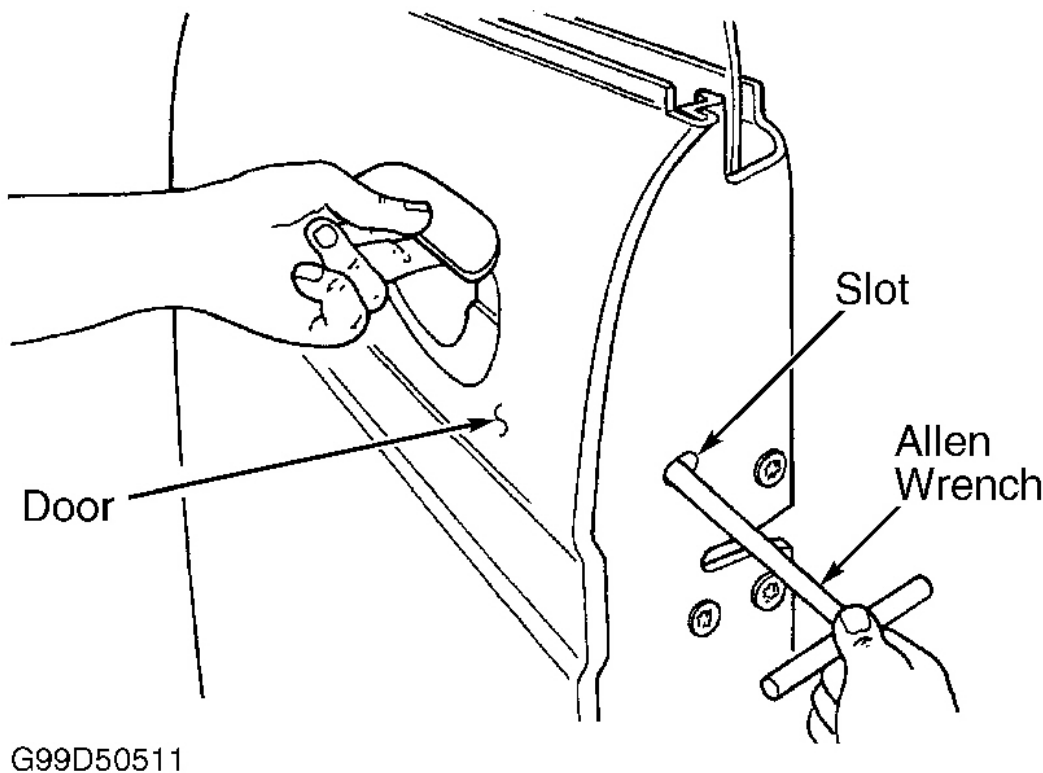


Fig. 1: Adjusting Door Latch
Courtesy of CHRYSLER CORP.

SYSTEM TESTS

For additional testing procedures related to power door locks and RKE system, not covered by this article, see **BODY CONTROL MODULES - SEBRING CONVERTIBLE, SEBRING SEDAN & STRATUS SEDAN** article.

DOOR LOCK CYLINDER SWITCH

1. Remove door trim panel. See **FRONT DOOR TRIM PANEL** or **REAR DOOR TRIM PANEL** under **REMOVAL & INSTALLATION**. Disconnect suspect door lock switch. Check for battery voltage between door lock switch harness connector terminals No. 1 (Pink wire) and No. 3 (Black wire). Place positive lead on terminal No. 1 and negative lead on terminal No. 3. If battery voltage does not exist, check fuse No. 5 (10-amp) located in junction block at lower left side of instrument panel. Also check fuse No. 4 (20-amp) located in power distribution center in engine compartment, near air cleaner. If fuses are okay, repair suspect door lock switch wire circuit. If battery voltage exists, go to next step.
2. Check for battery voltage between ground and door lock switch harness connector terminals No. 2 (White wire). If battery voltage exists, check door lock switch. See **DOOR LOCK SWITCH** under

2001 Dodge Stratus ES

2001 ACCESSORIES & EQUIPMENT' Power Door Locks & Remote Keyless Entry Systems - Sebring Convertible, Sebring Sedan & Stratus Sedan

COMPONENT TESTS. If battery voltage does not exist, check fuse No. 4 (15-amp) located in junction block at lower left side of instrument panel. If fuses are okay, repair suspect door lock switch wire circuit.

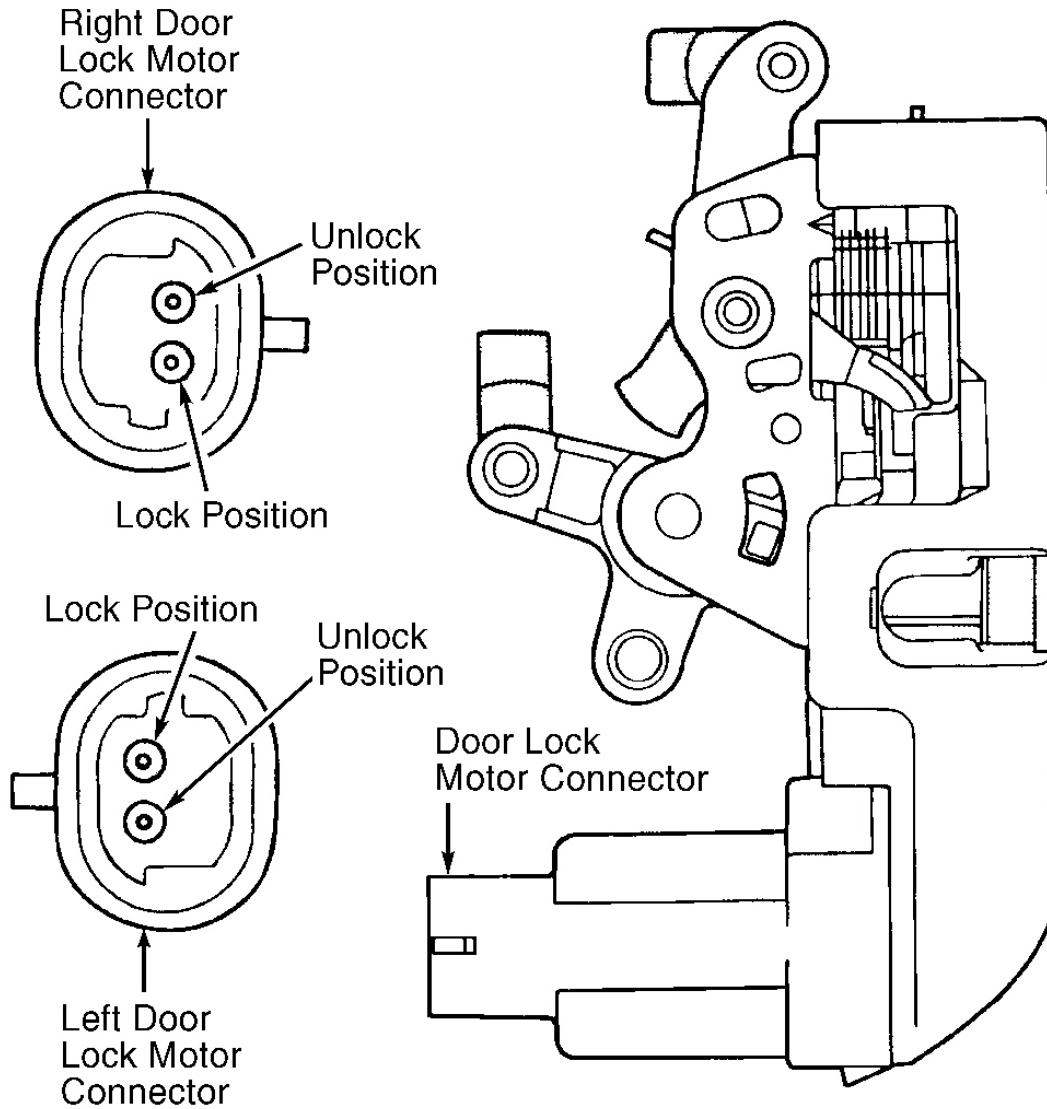
COMPONENT TESTS

DOOR LOCK MOTOR

1. Ensure battery is fully charged. To determine which motor is faulty, check each motor individually. Disconnecting a bad motor will allow others to work. If a motor does not work because of a broken wire, other motors will still operate.
2. Remove door trim panel to access door lock motor. See **FRONT DOOR TRIM PANEL** or **REAR DOOR TRIM PANEL** under REMOVAL & INSTALLATION. Disconnect connector at motor. See **Fig. 2** . Check for battery voltage at harness side of door lock motor connector while operating door lock switch. If battery voltage does not exist, repair circuit between switch and motor. If battery voltage exists, go to next step.
3. Apply battery voltage to door lock motor connector terminal and ground other terminal. Reverse wire connections at terminals. Motor should operate in both directions. If door lock motor does not operate properly, replace motor. If battery voltage does not exist, repair circuit. If motor still does not operate, replace motor.

2001 Dodge Stratus ES

2001 ACCESSORIES & EQUIPMENT' Power Door Locks & Remote Keyless Entry Systems - Sebring Convertible, Sebring Sedan & Stratus Sedan



G95B13723

Fig. 2: Identifying Door Lock Motor Terminals
 Courtesy of CHRYSLER CORP.

DOOR LOCK SWITCH

Remove switch. Check resistance between door lock switch with switch in LOCK and UNLOCK positions. See **DOOR LOCK SWITCH RESISTANCE** table. Replace switch if readings are not as specified.

DOOR LOCK SWITCH RESISTANCE

Switch Position	Continuity Between Terminals No.	Ohms

--	--	--

2001 Dodge Stratus ES

2001 ACCESSORIES & EQUIPMENT' Power Door Locks & Remote Keyless Entry Systems - Sebring Convertible, Sebring Sedan & Stratus Sedan

Lock	1 & 4	1620-1980
Unlock	1 & 4	675-825

REMOVAL & INSTALLATION

WARNING: Vehicles are equipped with air bag supplemental restraint system. Before attempting ANY repairs involving steering column, instrument panel or related components, see **SERVICE PRECAUTIONS** and **DISABLING & ACTIVATING AIR BAG SYSTEM** in appropriate **AIR BAG RESTRAINT SYSTEMS** article.

CAUTION: When battery is disconnected, vehicle computer and memory systems may lose memory data. Driveability problems may exist until computer systems have completed a relearn cycle. See **COMPUTER RELEARN PROCEDURES** article in **GENERAL INFORMATION** before disconnecting battery.

BODY CONTROL MODULE

NOTE: If BCM is replaced, transmitter codes must be programmed into replacement BCM memory using scan tool. See **RKE TRANSMITTER** under **PROGRAMMING**.

Removal & Installation

Remove junction block. See **JUNCTION BLOCK** . Remove 2 screws attaching BCM to junction block. Release 2 latches holding BCM to junction block. Remove BCM from junction block. To install, reverse removal procedure. Program BCM. See **BODY CONTROL MODULE** under **PROGRAMMING** in **BODY CONTROL MODULES - SEBRING CONVERTIBLE, SEBRING SEDAN & STRATUS SEDAN** article.

FRONT DOOR TRIM PANEL

Removal & Installation (Sebring Convertible)

1. Roll door glass down. Disengage clips holding speaker grille to trim panel. Remove screws securing door trim panel to door.
2. Disengage clips holding perimeter of trim panel to door. Lift trim panel upward and disengage panel from upper retainer channel.
3. Tilt trim panel away from door. Disengage clip holding latch linkage to back of inside door handle. Disconnect appropriate electrical connectors. Remove door trim panel. To install, reverse removal procedure.

Removal & Installation (Sebring Sedan & Stratus Sedan)

1. Disconnect battery. Open door. Disconnect main wiring harness at door opening. If equipped, remove window crank. Disengage clips attaching speaker grille to trim panel. Remove screws attaching door trim



2001 Dodge Stratus ES

2001 ACCESSORIES & EQUIPMENT' Power Door Locks & Remote Keyless Entry Systems - Sebring Convertible, Sebring Sedan & Stratus Sedan

panel to door from around speaker opening. Remove screw cap from bottom of armrest pull cup.

2. Remove screw attaching armrest pull cup to support bracket behind trim panel. Remove screw cap from behind inside door latch handle. Remove screw attaching door latch handle door panel. Disengage clips holding trim panel to perimeter of door.
3. Lift trim panel upward to disengage upper retainer channel. Tilt top of trim panel away from door. Disengage clip holding latch linkage to back of release handle. Remove door trim panel from vehicle. To install, reverse removal procedure.

REAR DOOR TRIM PANEL

Removal & Installation

1. Open rear door, and lower window. Remove window crank. Remove door trim panel mounting screws from door pull cup and behind door latch handle. Remove door latch handle. Disengage clips from around edge of trim panel. Disengage trim panel from inner belt weather-strip at top of door.
2. Separate top of trim panel from door. Disengage linkage clip holding linkage to latch handle. Separate linkage from latch handle. Lift and remove lock button. Remove door trim panel. To install, reverse removal procedure.

TRUNK LATCH SOLENOID

NOTE: Trunk latch solenoid is part of trunk latch assembly.

Removal & Installation

Raise trunk lid. Disengage clips holding latch cover and remove cover. Remove 2 solenoid mounting bolts and wiring connectors. Remove trunk latch assembly. To install, reverse removal procedure. Adjust door latch. See **TRUNK LATCH** under ADJUSTMENTS.

JUNCTION BLOCK

1. Disconnect negative battery cable. Open driver's door and remove end cap from instrument panel. Remove scuff plate and center bezel. Remove instrument cluster hood. Remove left side knee bolster. Remove steering column cover. Remove silencer. Remove wiring harness connectors from junction block.
2. Remove 3 junction block screws. Remove junction block from mounting bayonet by pulling straight down. Disconnect BCM wiring connectors. Remove junction block from vehicle. To install, reverse removal procedure.

WIRING DIAGRAMS



2001 Dodge Stratus ES

2001 ACCESSORIES & EQUIPMENT' 'Power Door Locks & Remote Keyless Entry Systems - Sebring Convertible, Sebring Sedan & Stratus Sedan

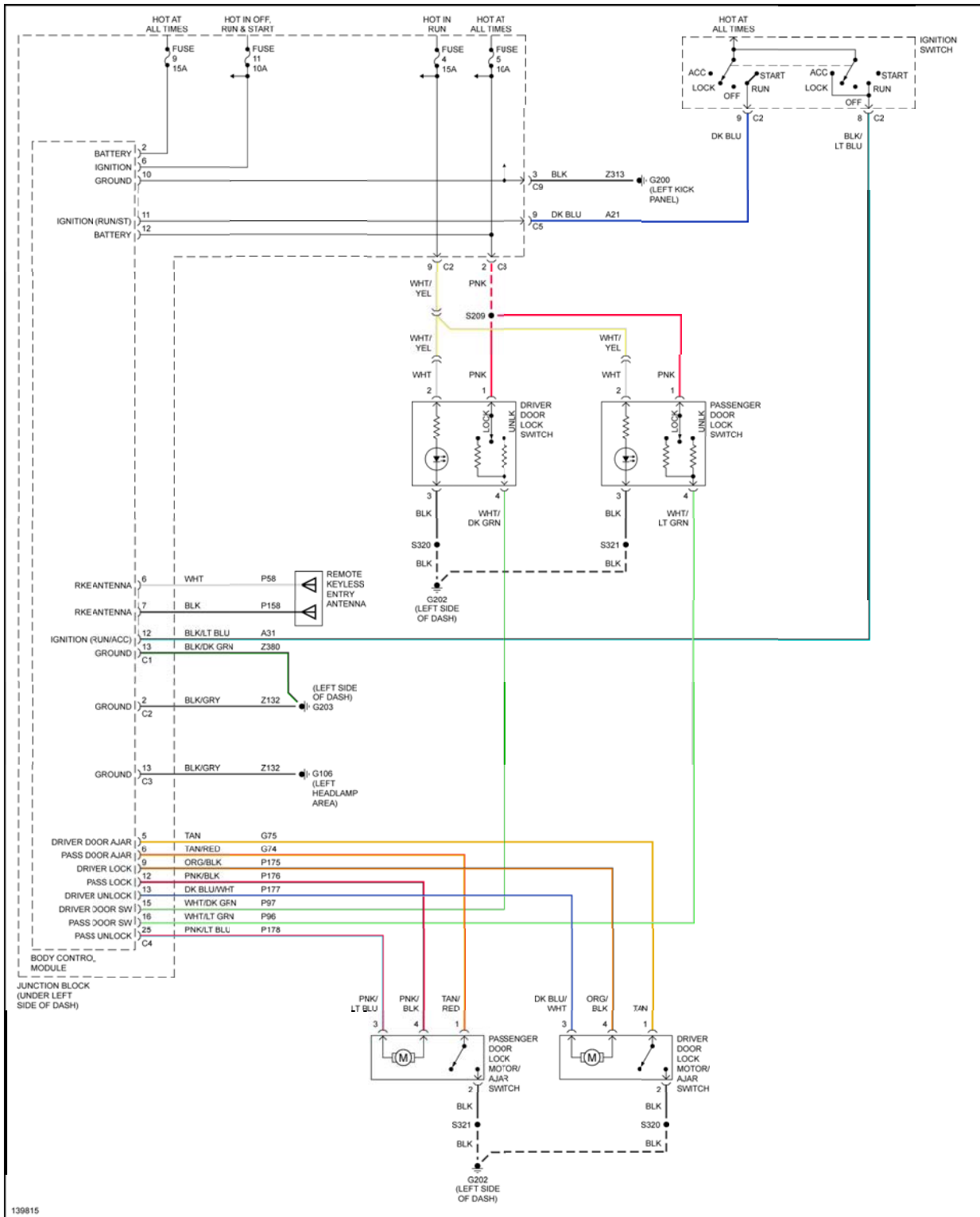


Fig. 3: Power Door Locks & Remote Keyless Entry System Wiring Diagram (Sebring Convertible)

2001 Dodge Stratus ES

2001 ACCESSORIES & EQUIPMENT' Power Door Locks & Remote Keyless Entry Systems - Sebring Convertible, Sebring Sedan & Stratus Sedan

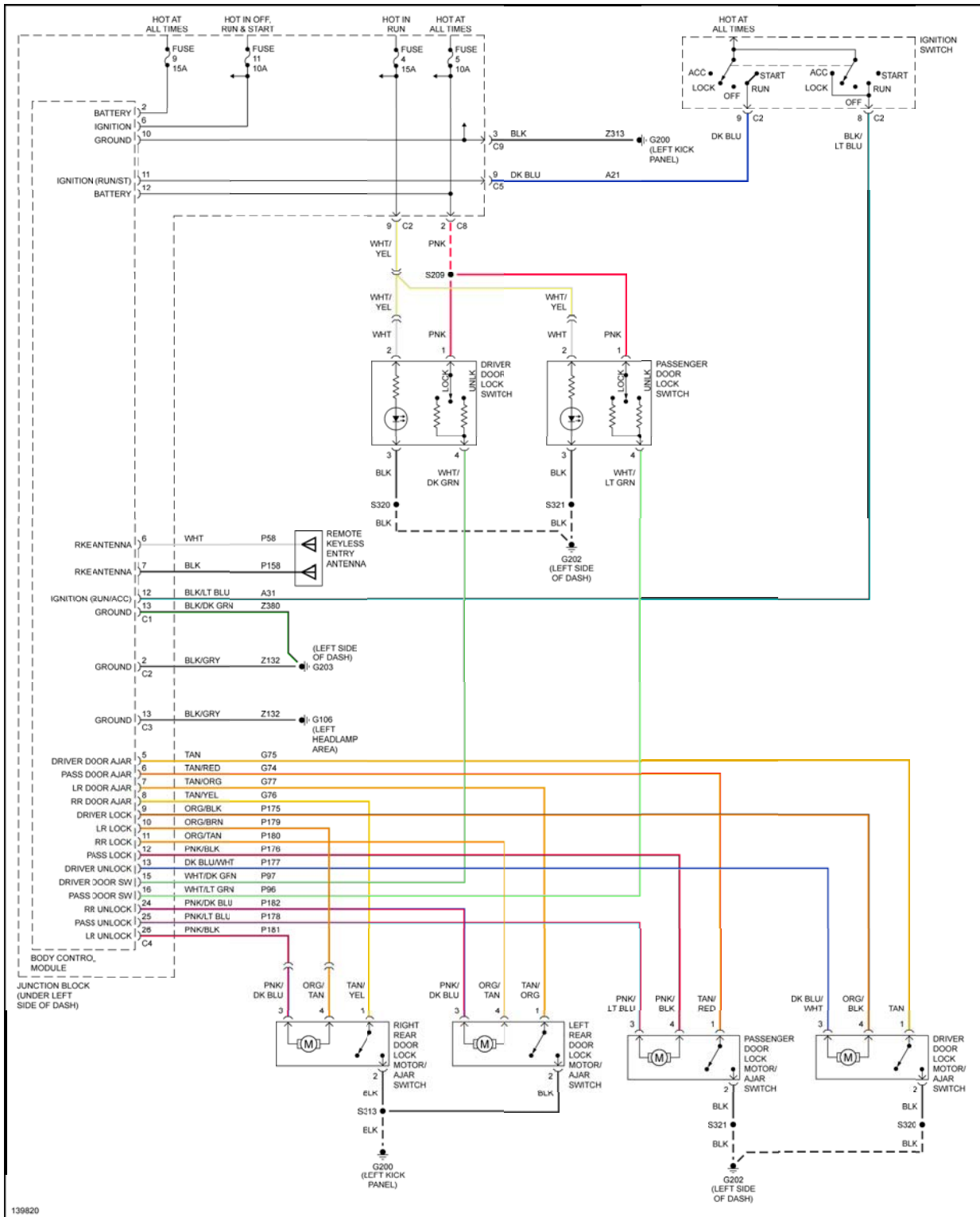


Fig. 4: Power Door Locks & Remote Keyless Entry System Wiring Diagram (Sebring Sedan & Stratus

2001 Dodge Stratus ES

2001 ACCESSORIES & EQUIPMENT' Power Door Locks & Remote Keyless Entry Systems - Sebring Convertible,
Sebring Sedan & Stratus Sedan

Sedan)

--	--	--

