

Computers and Control Systems: Diagnostic Trouble Code Tests and Associated Procedures

P1128

DESCRIPTION

The air/fuel control system, in addition to a number of sensors, includes the following components and systems:

- Intake air system.
- Exhaust system.
- Evaporative emissions control system (includes purge control solenoid valve).
- Fuel injectors.
- Fuel pressure regulator.
- Fuel pump.

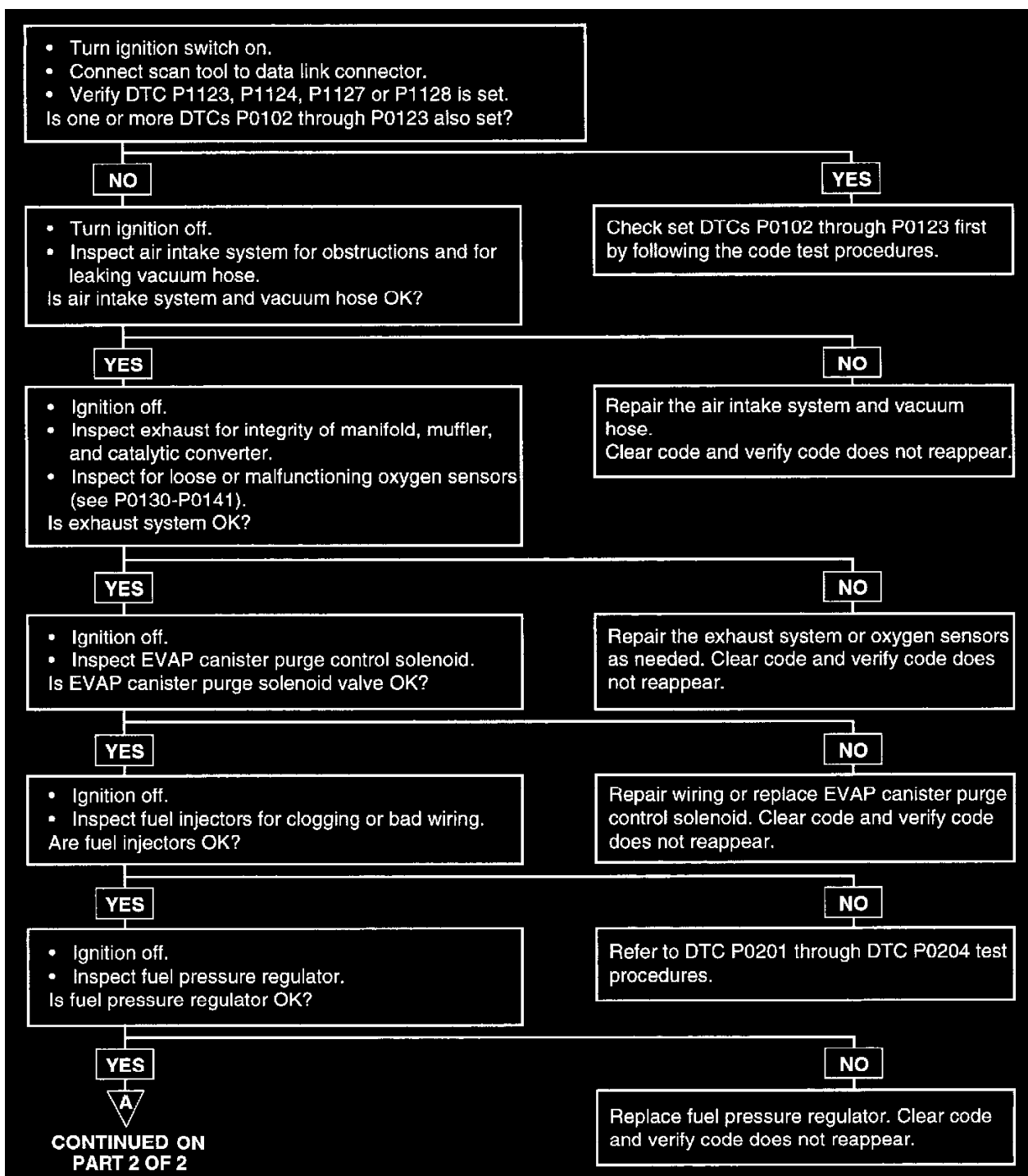
For the air/fuel ratio to be within limits, all of the sensors, components and systems associated with the air/fuel control system must function within normal parameters.

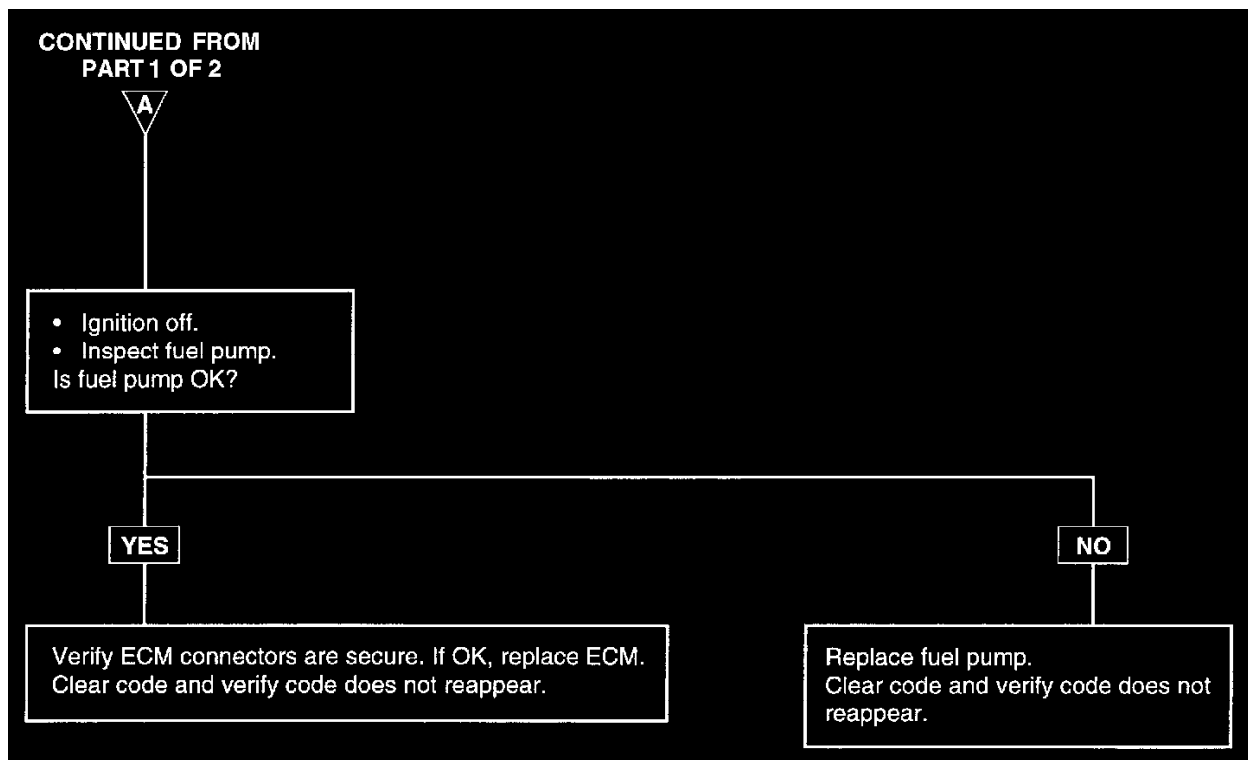
FAILURE CONDITIONS

(FOR LONG-TERM FUEL TRIM)

The ECM will set a code and the Malfunction Indicator Lamp (MIL) will turn on if the long-term fuel trim value goes to 10% to 15% lean for **30 seconds** during two driving cycles when the following conditions are met:

1. Engine load exceeds **1.8 milliseconds**.
2. Engine coolant temperature is above **158 °F (70 °C)**.
3. Canister purge system is not operating.
4. Mass air flow is less than or **5.5 g/s**.
5. Engine speed is below **1000 RPM**.





Part 2 Of 2

TEST PROCEDURE